

PARCEL MAP

CONSISTING OF THREE SHEETS

F. E. TROTTER, INC., ET AL

BEING ALL OF PARCEL "A" AS SHOWN ON
PARCEL MAP RECORDED IN BK. 450 OF MAPS
AT PG. 56 COUNTY OF SANTA CLARA,
CITY OF SANTA CLARA, CALIF.

MISSION ENGINEERS INC.

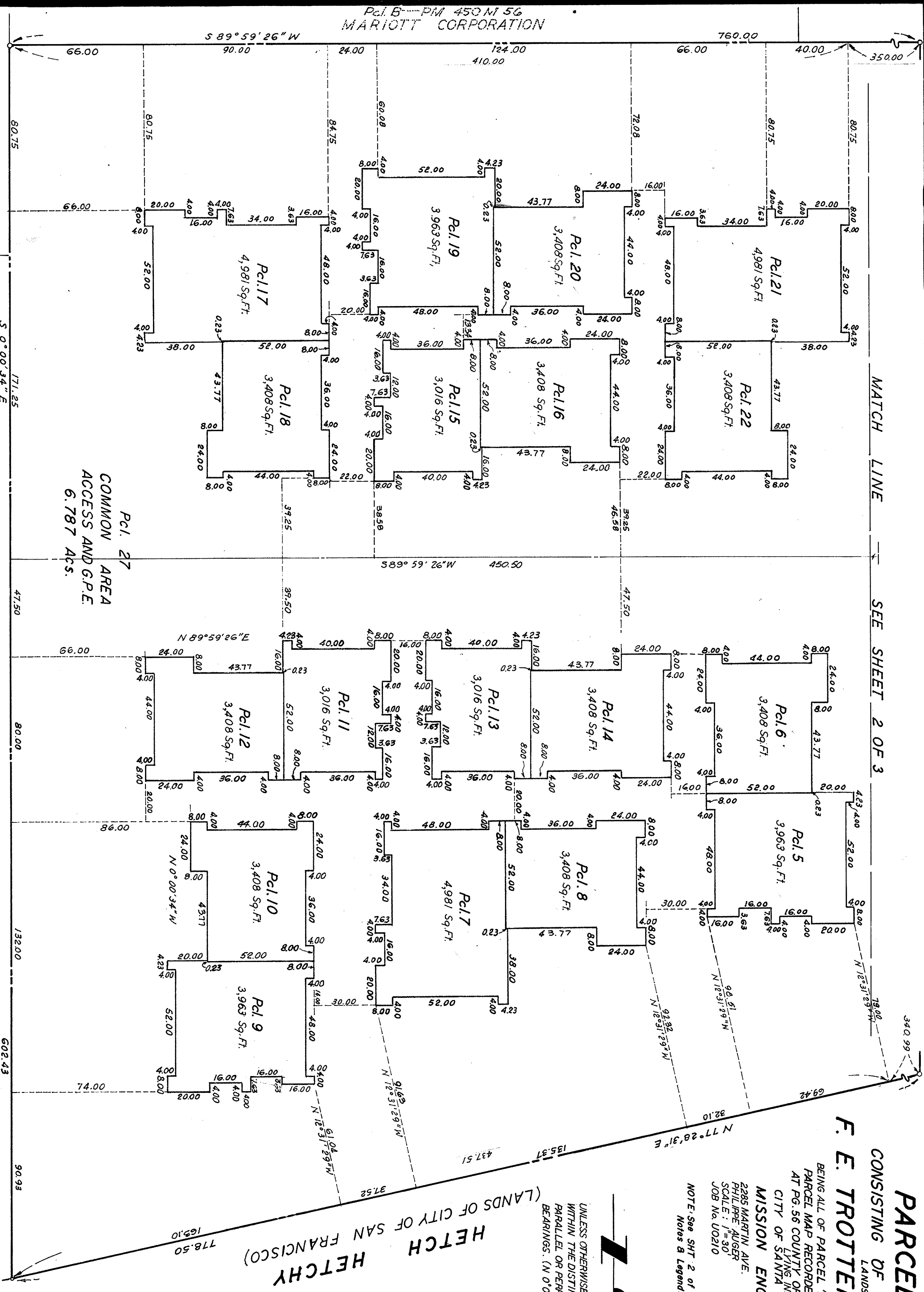
2285 MARTIN AVE. SANTA CLARA, CALIF.
PHILIPPE AUGER CIVIL ENGINEER
SCALE: 1"=30'
JOB No. U0210
MARCH 1980
DWG. No. M7221

NOTE: See SHT. 2 of 3 For Basis of Bearings,
Notes & Legend.



UNLESS OTHERWISE NOTED ALL LOT LINE BEARINGS
WITHIN THE DISTINCTIVE BORDER LINE ARE EITHER
PARALLEL OR PERPENDICULAR TO THE BASIS OF
BEARINGS. (N 0°00'34"W)

HETCH HETCHY
(LANDS OF CITY OF SAN FRANCISCO)



PARCEL 30
386 MAPS 485
MARIOTT CORPORATION
Pcl. 26
386 MAPS 485 RECORDED
FILE No. BOOK OF MAPS, PAGES, & SHEET 3 OF 3
CSC 5.1211