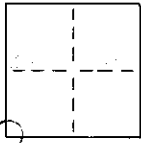


# CORNER RECORD

COUNTY OF MONO T. 12N R. 20E 17.011 MERIDIAN CALIFORNIA

CORNER TYPE: GOV'T. CORNER ☐ MEANDER ☐ RANCHO ☐ CONTROL ☐ OTHER ☒

CORNER IDENTIFICATION - DATE OF VISIT May 7 19 80



CORNER - LEFT AS FOUND ☒ FOUND AND TAGGED ☐ REESTABLISHED OBLITERATED CORNER ☐ REBUILT ☐

PHYSICAL DESCRIPTION OF CORNER FOUND: EVIDENCE AND METHOD USED TO IDENTIFY OR REESTABLISH

2 inch Iron Pipe 2' from corner, 1/2 inch from 1" hole in pipe, 1/2 inch from 1/2 inch hole in pipe, 1/2 inch from 1/2 inch hole in pipe.

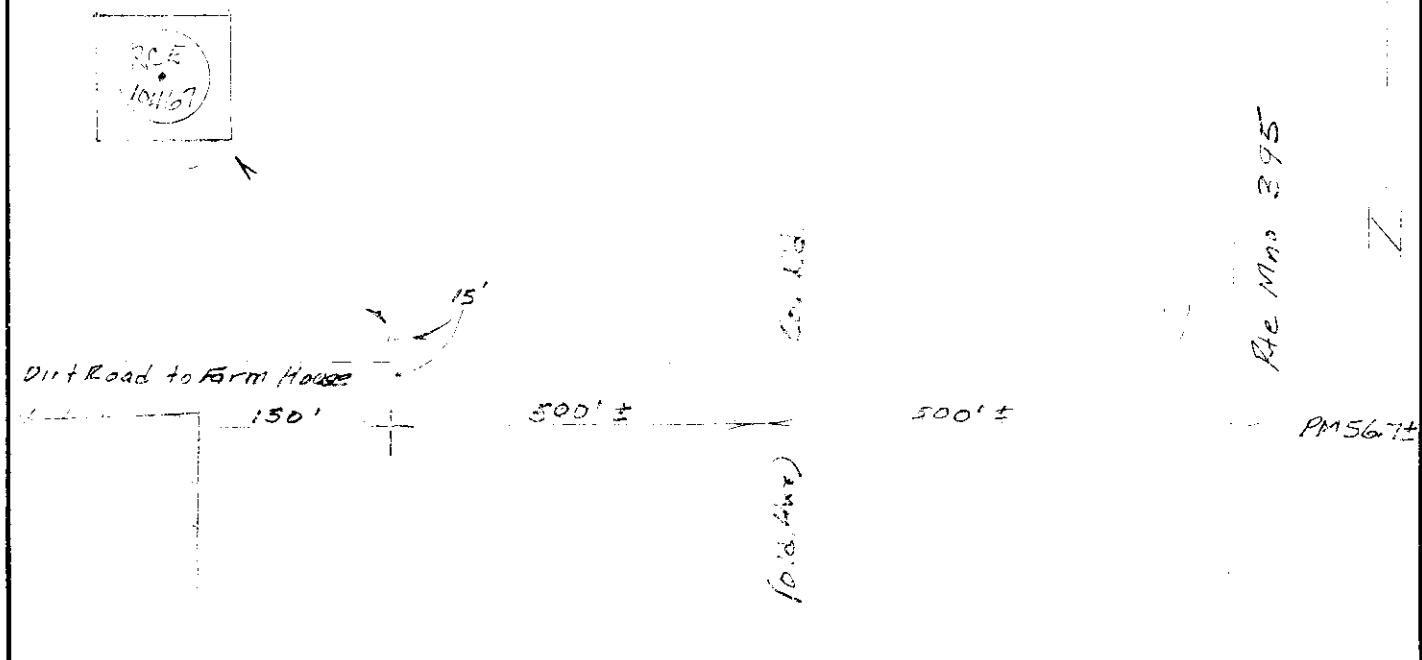
PHYSICAL DESCRIPTION OF MONUMENTS REBUILT OR PERPETUATED

CALIFORNIA COORDINATE SYSTEM ORDER: FIRST ☐ SECOND ☐ THIRD ☐

STATIONS USED: NGS (USC & GS) ☐ STATE ☐ COUNTY ☐ OTHER ☐ STATION \_\_\_\_\_ STATION \_\_\_\_\_

ZONE 3 ELEVATION \_\_\_\_\_ NORTHINGS (Y) \_\_\_\_\_ EASTINGS (X) \_\_\_\_\_

SKETCH: (Include reference tie or witness points, remarks and topo of area)



## SURVEYOR'S CERTIFICATE

THIS CORNER RECORD WAS PREPARED BY ME OR UNDER MY DIRECTION IN CONFORMANCE WITH THE LAND SURVEYORS ACT ON \_\_\_\_\_ 19 \_\_\_\_\_

SIGNED: \_\_\_\_\_

L.S. or R.C.E. No.: \_\_\_\_\_

SEAL

## COUNTY SURVEYOR'S CERTIFICATE

THIS CORNER RECORD WAS RECEIVED June 10 19 80 AND EXAMINED AND FILED APRIL 10 19 81

BY: R. H. Benson

TITLE: DEPUTY COUNTY SURVEYOR

DOCUMENT No. 24 26-15-1

STATEMENT ON BACK OF SHEET

YES ☐ NO ☒