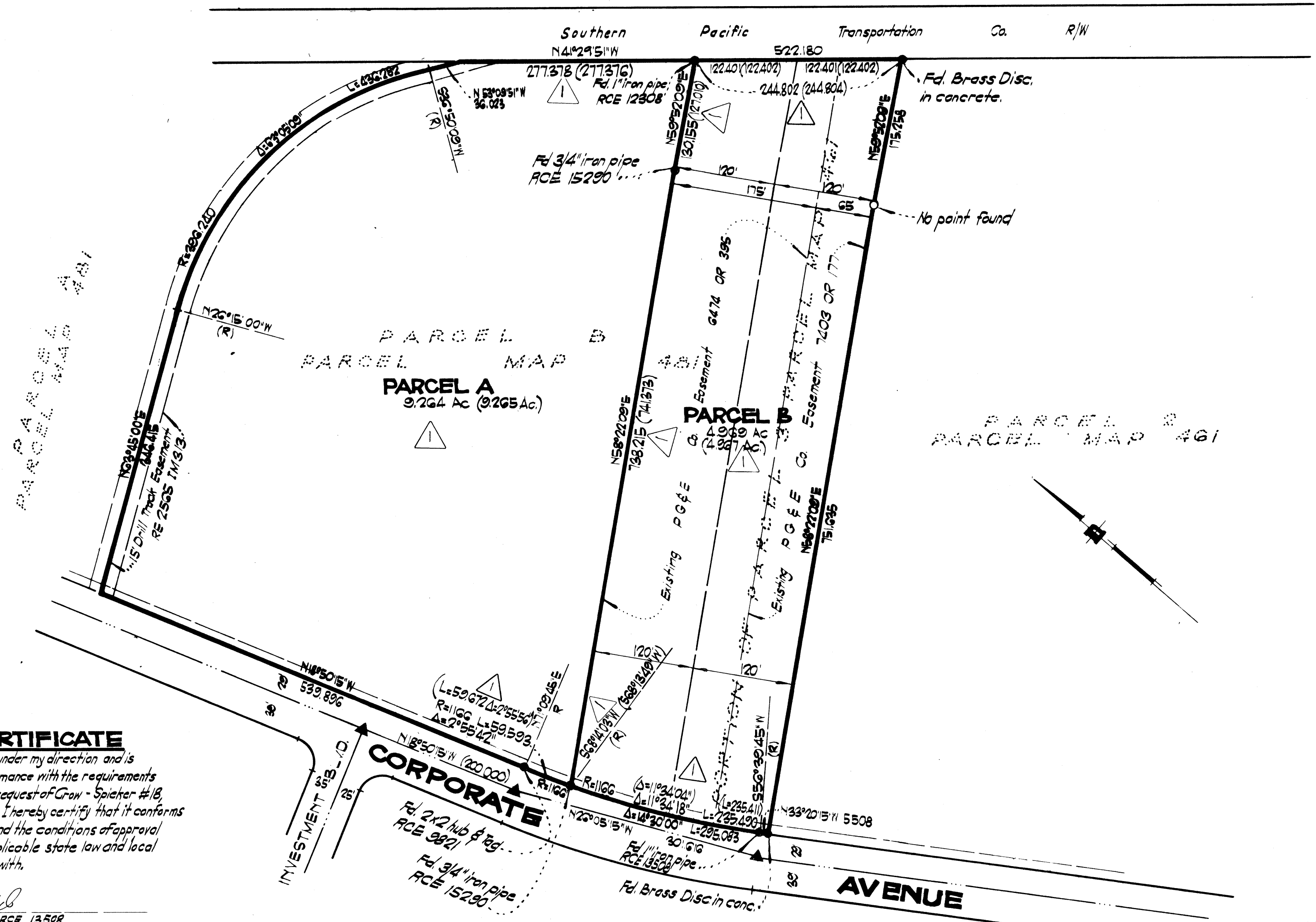


7-161277

84/99



### SURVEYOR'S CERTIFICATE

This map was prepared by me or under my direction and is based upon record data in conformance with the requirements of the Subdivision Map Act of the request of Crow - Spieker #18 A Partnership, in February, 1974. I hereby certify that it conforms to the approved tentative map and the conditions of approval thereof; that all provisions of applicable state law and local ordinances have been complied with.

*Ralph J. Nofield*  
RALPH J. NOFIELD RCE 13508

### BASIS OF BEARINGS

Monument line on Corporate Avenue as shown on Tract N9 2898, recorded in Book 55, Pages 25-29, bearing N13°50'15"W.

### SURVEYOR'S CERTIFICATE

This is to certify that this amended map consisting of 1 sheet, changes the shown location of the line between Parcels A and B on Parcel Map 1383, recorded in Book 83 of Parcel Maps at page 37, on the 24th day of March, 1974.

*Ralph J. Nofield*  
RALPH J. NOFIELD RCE 13508

### NOTES AND LEGEND

All distances and dimensions are shown in feet and decimals thereof. The blue borderline indicates the boundary of land included within this map.

- ▲ Indicates existing street monument.
- Indicates 2" iron pipe monument found unless otherwise noted.
- Indicates 1" iron pipe monument to be set, RCE 13508
- △ Indicates correction of split of angle point and revised bearings distances and Parcel Areas. Original dimensions in brackets.

### CITY ENGINEER'S CERTIFICATE

This map has been examined this 17th day of December, 1974 for conformance with the requirements of Section 11515 of the Subdivision Map Act.

*Wayne A. Bruce*  
WAYNE A. BRUCE RCE 13060

### COUNTY SURVEYOR'S CERTIFICATE

This map has been examined this 24th day of Dec. 1974 for conformance with the requirements of section 11629 of the Subdivision Map Act.

*Herbert G. Crowle*  
COUNTY SURVEYOR OF ALAMEDA COUNTY  
HERBERT G. CROWLE RCE 6516

### RECORDER'S CERTIFICATE

Filed this 26 day of December 1974 at 9:45 AM in Book 84 of Parcel Maps at page 99 at the request of Ralph J. Nofield  
File No 74-161277 Fee \$5.00  
*Jack C. Blue*  
COUNTY RECORDER  
By *Susan Super*  
DEPUTY

★ USE WITH CAUTION ★  
THIS IS A PUBLIC WORKS DEPARTMENT  
WORKING COPY OF AN OFFICIAL MAP  
ON FILE IN THE OFFICE OF THE COUNTY  
RECORDER, COUNTY OF ALAMEDA. OF-  
FICE INFORMATION OR CALCULATIONS  
MAY HAVE BEEN ADDED HEREON.

# AMENDED PARCEL MAP NO. 1383

MAP BOOK 83 PAGE 37  
FOR CROW - SPIEKER # 18 A PARTNERSHIP, OWNER. A RESUBDIVISION OF PARCEL B, P.M. 481, RECORDED BK 61 PG 56, AND A PORTION OF PARCEL 3 PARCEL MAP 461, RECORDED BK 58 PG 96, OFFICIAL RECORDS.

CITY OF HAYWARD  
ALAMEDA COUNTY, CALIFORNIA.

SCALE: 1"=100' AUGUST, 1974

GEORGE S. NOLTE AND ASSOCIATES

SAN JOSE • SAN FRANCISCO • WALNUT CREEK • SAN DIEGO 1121-B 9155-74 SHEET 1 OF 1 SHEET

Map Bk 84 Pg 99 FILED 12-26-74 84/99