

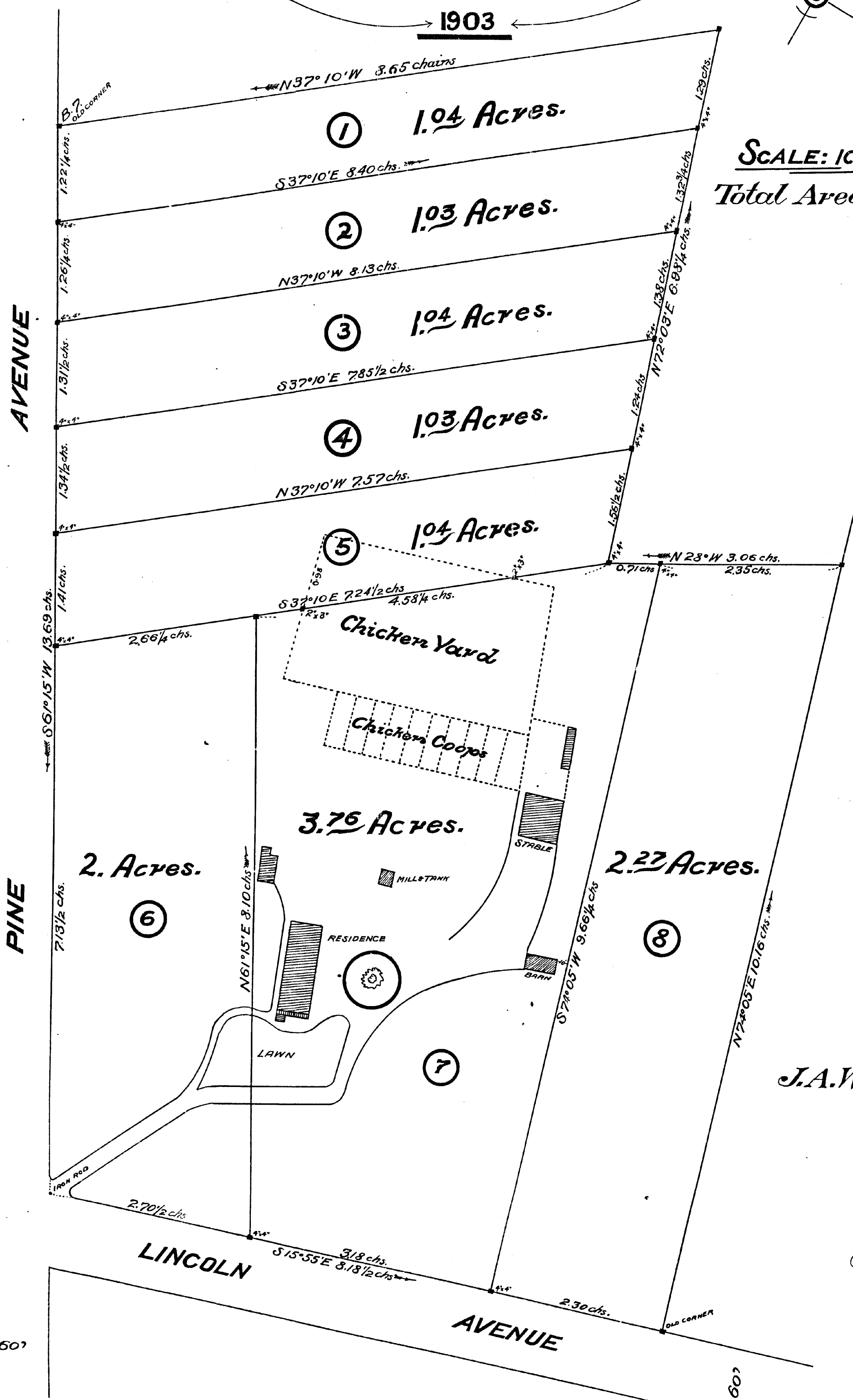
MAP

OF BEAULIEU BEING JOS. H. RUCKER & CO.'S SUBDIVISION OF A PART OF THE NARVAEZ RANCHO SANTA CLARA CO. CAL.

SURVEYED BY
CURTIS M. BARKER
SURVEYOR AND C.E.

1903

SCALE: 1 CHAIN = 1 INCH
Total Area 13.21 Acres.



J.A. Wally.

Jos. H. Rucker & Co.
April 11
Page 57
T. U. Treanor
By Order of P. U. Treanor
500

We hereby certify that Jos. H. Rucker & Co., a corporation of the City of San Jose, County of Santa Clara, State of California, is owner of the tract of land situated in the County of Santa Clara, State of California, shown and delineated on the map hereto attached; that said tract has been laid out and the blocks and lots numbered according to its instructions; that the attached map fully and faithfully represents said tract, its name and its subdivision, and it hereby dedicates the streets (roads), alleys and squares, as shown on the accompanying map, to the use of the public forever. Dated April 11th, 1904, at San Jose, Cal.

JOS. H. RUCKER & CO.,

President.

Secretary.

State of California)
County of Santa Clara) ss.

On this Eleventh day of April, in the year of our Lord one thousand nine hundred and four, before me, J. A. Wally, a Notary Public in and for the said County of Santa Clara, personally appeared to me to be the President, and B. A. Frothingham, known to me to be the Secretary of the Corporation that executed the within instrument, and acknowledged to me that such Corporation same.

WITNESS my hand and of the said County of Santa Clara this Eleventh day of April, 1904.