

EXHAUST FAN INFORMATION – Job#2773748

FAN UNIT NO.	TAG	FAN UNIT MODEL #	CFM	ESP.	RPM	H.P.	B.H.P.	Ø	VOLT	FLA	WEIGHT (LBS.)	SDNES
1		NCA16FA	3450	1.250	1230	2.000	1.3820	3	208	5.9	184	17.9
2		NCA16FA	3450	1.250	1230	2.000	1.3820	3	208	5.9	184	17.9
3		DD7FA	450	0.250	1134	0.250	0.0850	1	115	4.8	89	6.3

MUA FAN INFORMATION – Job#2773748

FAN UNIT NO.	TAG	FAN UNIT MODEL #	BLOWER	HOUSING	CFM	ESP.	RPM	H.P.	B.H.P.	Ø	VOLT	FLA	COOLING COIL ENTERING DB TEMP.	COOLING COIL ENTERING WB TEMP.	COOLING COIL LEAVING DB TEMP.	COOLING COIL LEAVING WB TEMP.	COOLING COIL TOTAL CAPACITY	COOLING COIL SENSIBLE CAPACITY	COOLING COIL LATENT CAPACITY	WEIGHT (LBS.)	SDNES
4		A3-G18	G18-PB	A3	5520	0.750	620	3.000	1.7960	3	208	8.7	95.0°F	78.0°F	81.9°F	72.9°F	120.0 MBH	77.9 MBH	42.1 MBH	1006	17.2

FAN OPTIONS

FAN UNIT NO.	TAG	OPTION (Qty. – Descr.)
1		1 – Grease Box 1 – Upblast Fan Wheel Access Port
2		1 – Grease Box 1 – Upblast Fan Wheel Access Port
3		1 – I 15-BDD Damper
4		1 – 10 Ton, 2 Circuit, 208/230V 3 Phase Condenser Kit. 4-6 week lead time. 1 – DX Coil Module –3,000 to 7,000 CFM (10 Ton 2 Circuit Coil) 1 – DXM 3-1 Refrigeration Parts Kit – R410A 1 – Cooling Thermostat, 2 Stage, 10 degree differential. Ships Loose With Untempered Fan.

FAN ACCESSORIES

FAN UNIT NO.	TAG	EXHAUST				SUPPLY			
		GREASE CUP	GRAVITY DAMPER	WALL MOUNT	SIDE DISCHARGE	GRAVITY DAMPER	MOTORIZED DAMPER	WALL MOUNT	
1		YES							
2		YES							
3			YES						

CURB ASSEMBLIES

NO.	ON FAN	WEIGHT	ITEM	SIZE
1	# 1	34 LBS	Curb	26.500"W x 26.500"L x 24.000"H Vented Hinged
2	# 2	34 LBS	Curb	26.500"W x 26.500"L x 24.000"H Vented Hinged
3	# 3	18 LBS	Curb	19.500"W x 19.500"L x 12.000"H
4	# 4	48 LBS	Curb	35.000"W x 35.000"L x 20.000"H
	# 4		Rail	6.000"W x 35.000"L x 20.000"H

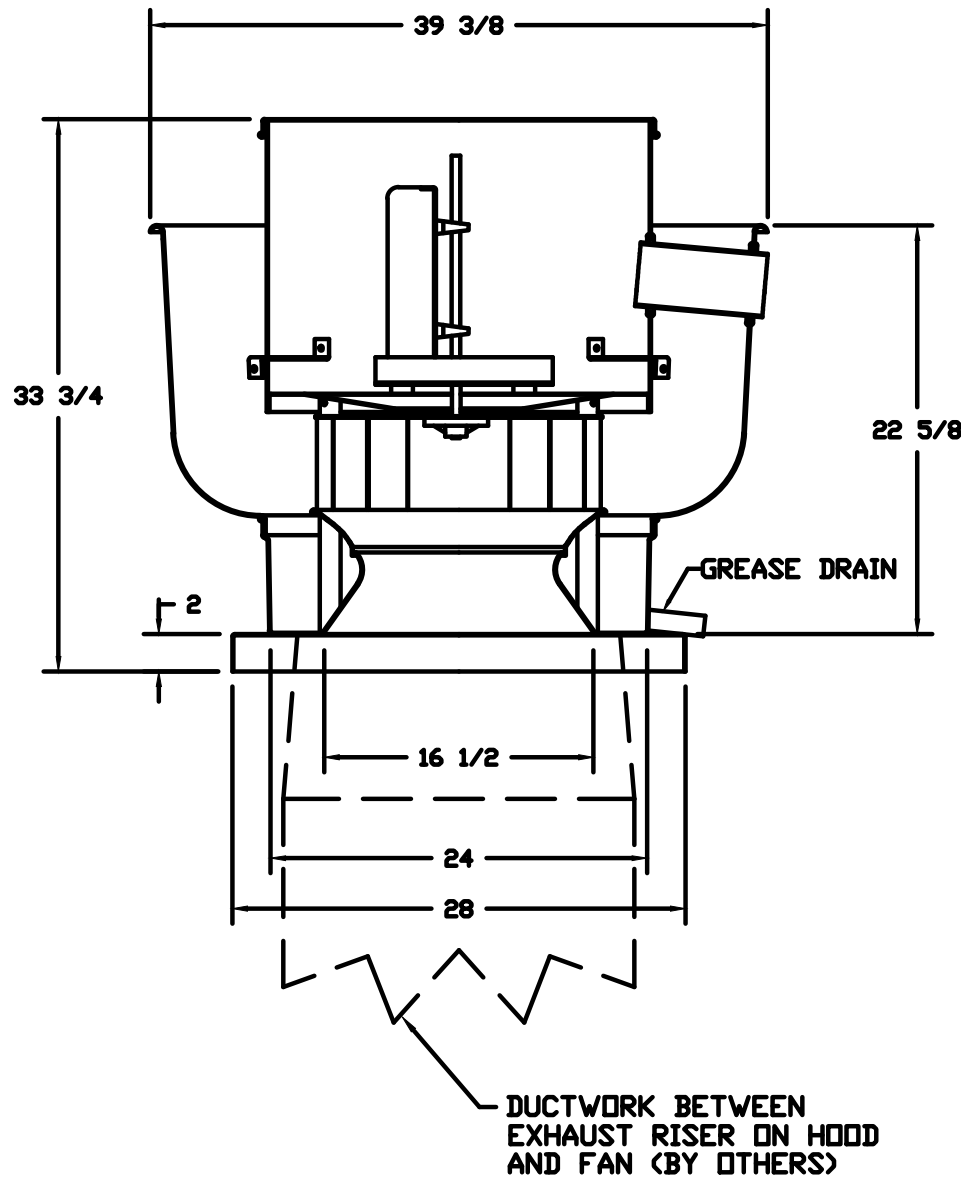
NOTE: UNLESS OTHERWISE STATED, PANDA RESTAURANT GROUP SHALL PROVIDE ALL EQUIPMENT ON THE FOLLOWING CAPTIVEAIRE SHEETS, INCLUDING: HOODS, FIRE SYTEM, EXHAUST FANS, SUPPLY FAN, BATHROOM FAN AND ELECTRICAL INTERLOCK PACKAGE

ANSUL GAS VALVE:

THE ANSUL GAS VALVE IS PROVIDED BY CAPTIVEAIRE SYSTEMS. CONTACT OUR OFFICE WITH THE VALVE SIZE 3 DAYS IN ADVANCE OF WHEN IT IS NEEDED ON SITE.

FOR QUESTIONS CALL THE CAPTIVEAIRE SOUTHERN CALIFORNIA OFFICE
STONE HILL DESIGN CENTER
2915 RED HILL AVE, SUITE C106
COSTA MESA, CA 92626
TEL: 800-967-7701 EMAIL: REG86@CAPTIVEAIRE.COM

FANS #1, #2 – NCA16FA EXHAUST FAN



FEATURES:

- ROOF MOUNTED FANS
- RESTAURANT MODEL
- UL705 AND UL762
- AMCA SOUND AND AIR CERTIFIED
- WIRING FROM MOTOR TO DISCONNECT SWITCH
- WEATHERPROOF DISCONNECT
- HIGH HEAT OPERATION 300°F (149°C)
- GREASE CLASSIFICATION TESTING

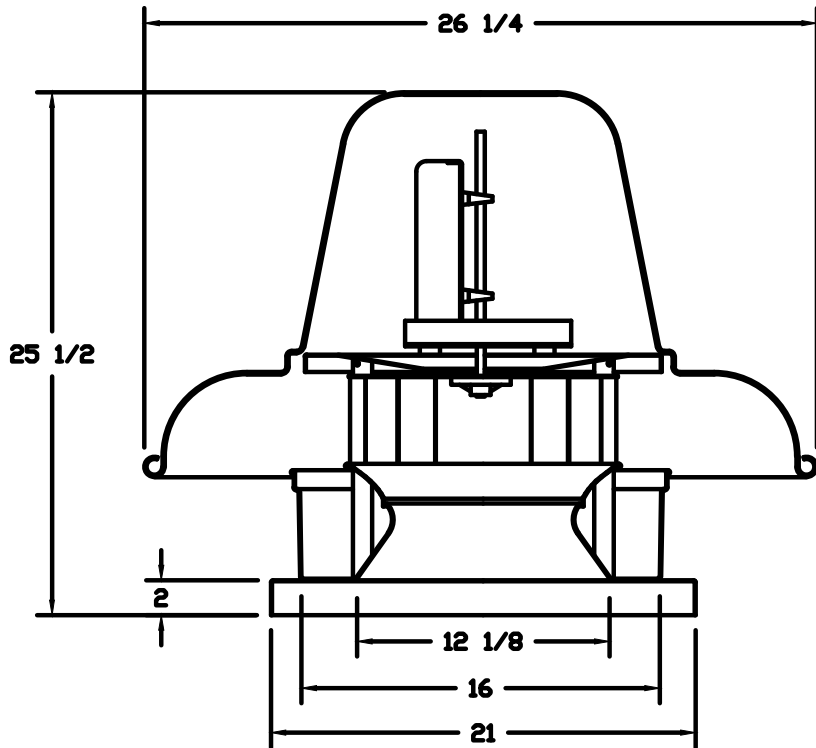
NORMAL TEMPERATURE TEST
EXHAUST FAN MUST OPERATE CONTINUOUSLY WHILE EXHAUSTING AIR AT 300°F (149°C) UNTIL ALL FAN PARTS HAVE REACHED THERMAL EQUILIBRIUM, AND WITHOUT ANY DETERIORATING EFFECTS TO THE FAN WHICH WOULD CAUSE UNSAFE OPERATION.

ABNORMAL FLARE-UP TEST
EXHAUST FAN MUST OPERATE CONTINUOUSLY WHILE EXHAUSTING BURNING GREASE VAPORS AT 600°F (316°C) FOR A PERIOD OF 15 MINUTES WITHOUT THE FAN BECOMING DAMAGED TO ANY EXTENT THAT COULD CAUSE AN UNSAFE CONDITION.

OPTIONS

- GREASE BOX
- UPBLAST FAN WHEEL ACCESS PORT

FAN #3 DD7FA – EXHAUST FAN

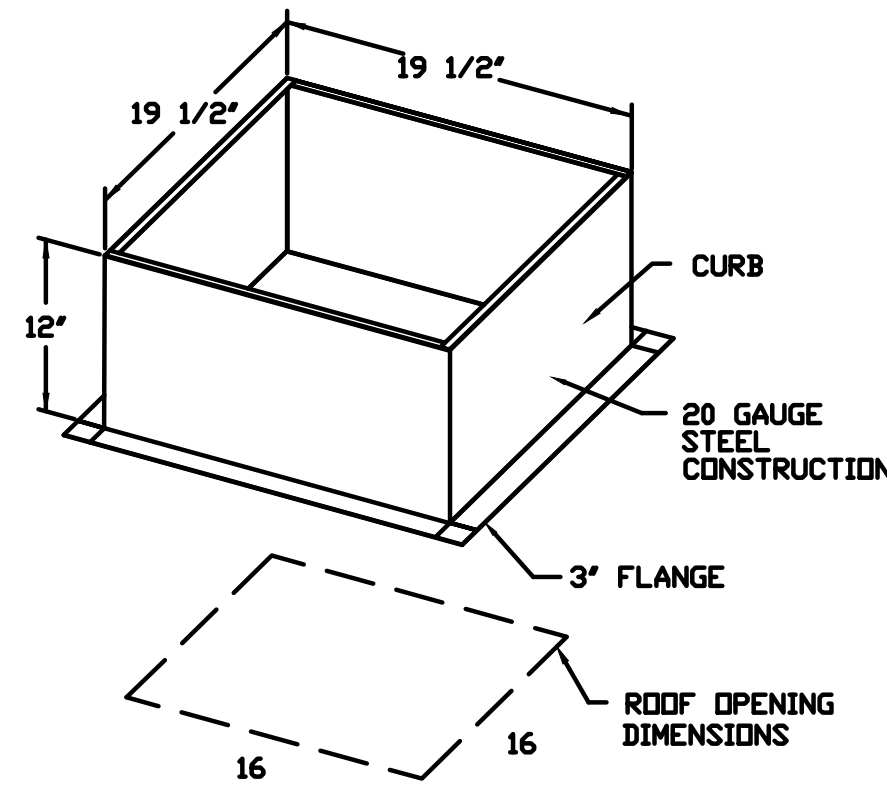
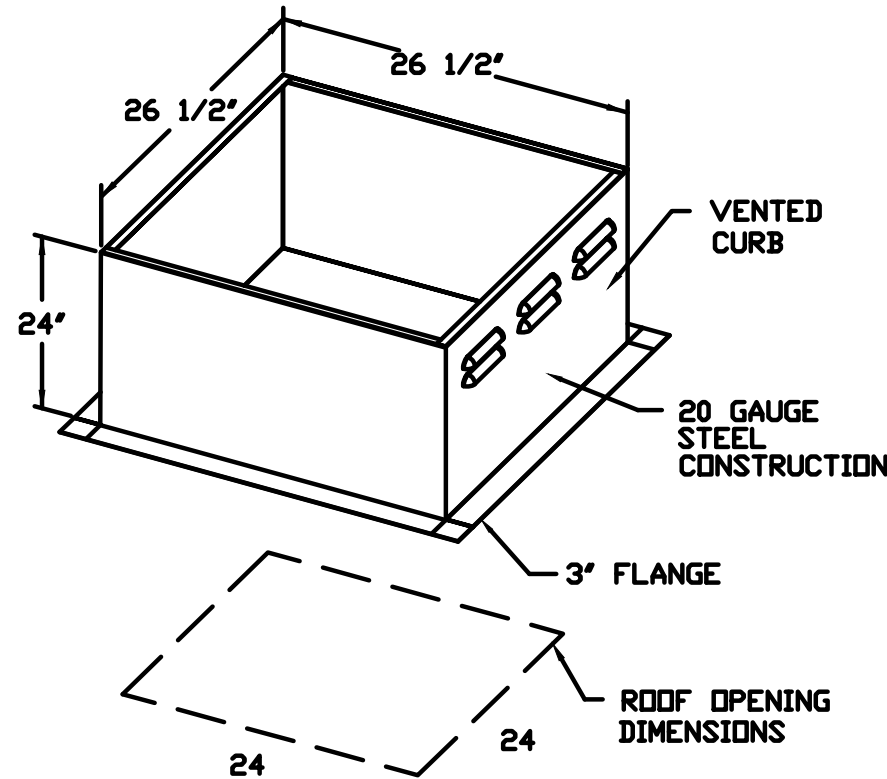


FEATURES:

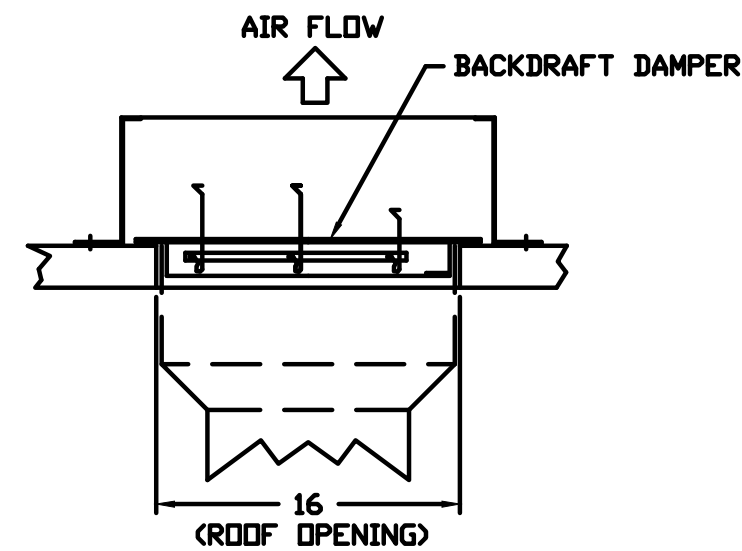
- ROOF MOUNTED FANS
- UL705
- AMCA SOUND AND AIR CERTIFIED
- WIRING FROM MOTOR TO DISCONNECT SWITCH
- DISCONNECT SWITCH
- STANDARD BIRD SCREEN

OPTIONS

- I 15-BDD DAMPER



BACKDRAFT DAMPER INSTALLATION



REVISIONS

DESCRIPTION	DATE
Δ	
Δ	
Δ	
Δ	

www.captiveaire.com

Southern California Office

3002 Dow Ave., Suite 410, Tustin, CA 92780 PHONE: (714) 957-1500 FAX: (919) 227-5975 EMAIL: reg86@captiveaire.com

Panda Express – Aiken SC (S8-17-D4676)

DATE: 9/13/2016

DWG.#:
2773748

DRAWN BY: AHJ-86

SCALE:
3/4" = 1'-0"

MASTER DRAWING

SHEET NO.
2



PANDA RESTAURANT GROUP INC.

1683 Walnut Grove Ave.
Rosemead, California
91770

Telephone: 626.799.9898
Facsimile: 626.372.8288

All ideas, designs, arrangement and plans indicated, or represented by this drawing are the property of Panda Express Inc. and were created for use on this specific project. None of these ideas, designs, arrangements or plans may be used by or disclosed to any person, firm, or corporation without the written permission of Panda Express Inc.

REVISIONS:

ISSUE DATE:

1ST	CHECKSET	09-23-2016
2ND	PERMIT SET	09-30-2016
3RD	BID SET	12-21-2016

DRAWN BY: SL

PANDA PROJECT #: S8-17-D5084

ARCH PROJECT #: 20160806

GreenbergFarrow

1430 West Peachtree St. NW, Suite 200
Atlanta, GA 30309
t: 404.601.4000

PROFESSIONAL SEAL

FOR INFORMATION ONLY

PANDA EXPRESS

SILVER BLUFF RD & PINE LOG RD
1065 PINE LOG ROAD
AIKEN, SC 29801

M-401

HOOD DETAIL PLAN