

THIS MAP CORRECTLY REPRESENTS
A SURVEY MADE BY ME OR UNDER MY
DIRECTION IN CONFORMANCE WITH THE
REQUIREMENTS OF THE LAND SURVEYOR'S
ACT AT THE REQUEST OF THE TOWNSHIP WARD
IN MARCH OF 1986.

HE REQUESTED JAMES WARD
OF 1986

John R. Longford

L.S. 51487

U.S. DEPT. OF JUSTICE
FEDERAL BUREAU OF INVESTIGATION
WASHINGTON, D.C.

RECEIVED
JAN 10 1987
FBI - LOS ANGELES

STATE OF CALIFORNIA

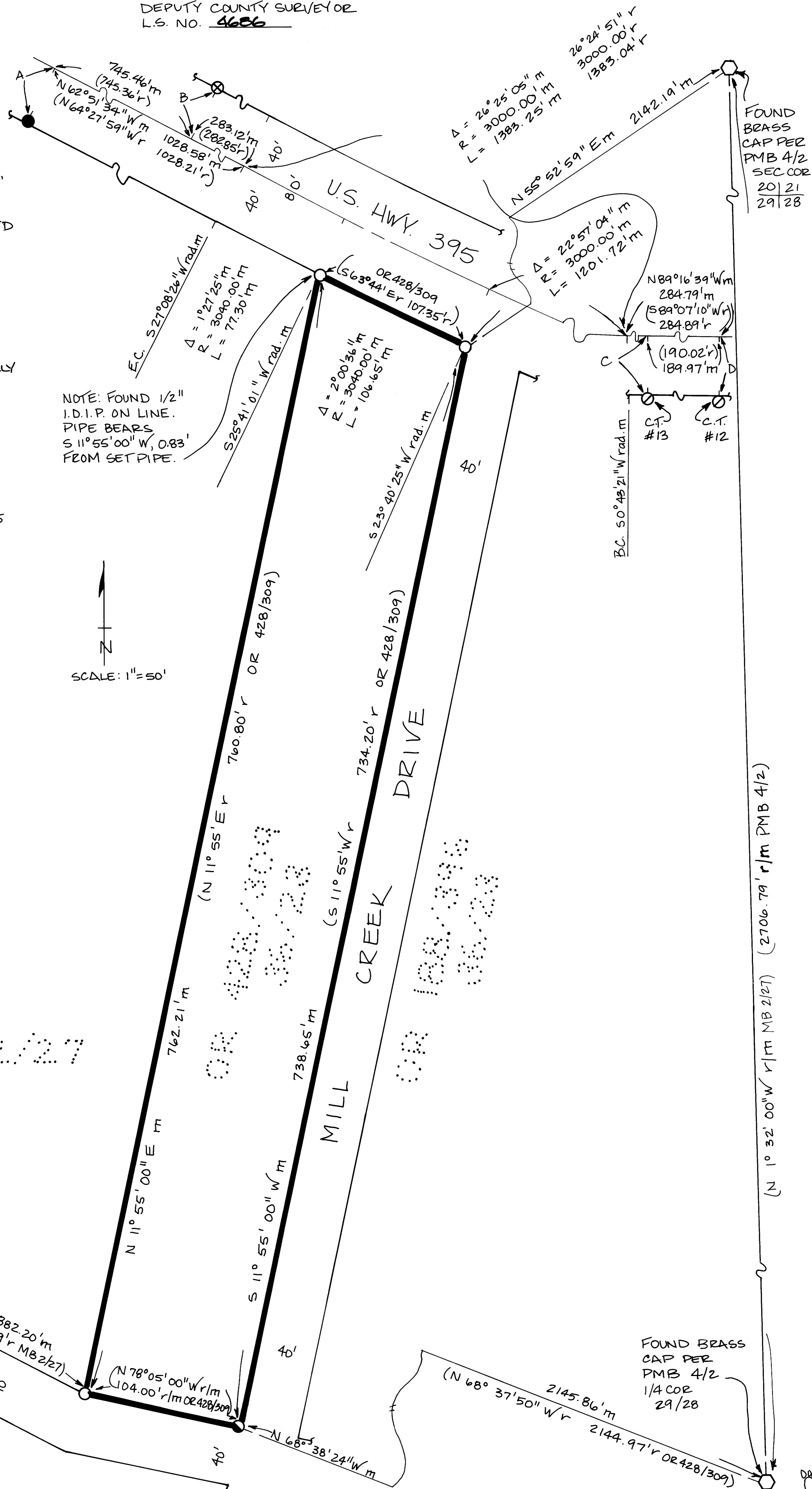
THIS MAP HAS BEEN EXAMINED IN
ACCORDANCE WITH SECTION 8766
OF THE LAND SURVEYOR'S ACT THIS
29 DAY OF APRIL, 1986.

RICHARD BOARDMAN
DEPUTY COUNTY SURVEYOR
L.S. NO. 4686

FILED THIS 22 DAY OF ^{Saturday} ~~APRIL~~ 1986, -July
AT, 3 P.M. IN BOOK 2 OF RECORD
OF SURVEYS AT PAGE 15 AT THE REQUEST
OF JAMES WARD.

INSTRUMENT NO.: 438
FEE: \$5.00
RENN NOLAN, MONO COUNTY RECORDER
BY: Deanne M. Roberts
DEPUTY COUNTY RECORDER

- FOUND 3/8" DIAMETER ORANGE REBAR, NO TAG, ACCEPTED PER CALTRANS R/W MAP POINT #36.
- FOUND 1/2" I.D. I.P., NO TAG, ACCEPTED PER CALTRANS R/W MAP POINTS #12 & #13 AS NOTED.
- ⊗ FOUND 1" I.D. I.P. & TAG R.C.E. 27104. ACCEPTED PER CALTRANS R/W MAP POINT #29.
- SET 1" I.D. I.P. & TAG L.S. 5149.
- FOUND 1" I.D. I.P. WITH CONCRETE CAP 6" BELOW GRADE. SUBSTANTIALLY CONFORMS TO SE COR LOT PER OR 428/309. ACCEPTED AS COR, SET TAG L.S. 5149 IN PIPE.
- FOUND 6" X 6" CONCRETE MONUMENT WITH 1/2" DIAMETER BRASS CAP STAMPED C.E. 7522. ACCEPTED PER MB 2/27.
- r BASED ON RECORDED INFORMATION PER CALTRANS R/W MAP # 9-MNO-395 UNLESS OTHERWISE NOTED.
- m BASED ON FIELD MEASUREMENTS.



BEARING

	BEARING	DISTANCE
A =	N 27° 08' 26" E m N 25° 32' 01" E r	37.76' m 37.76' r
B =	S 27° 08' 26" W m S 25° 32' 01" W r	39.85' m 39.85' r
C =	N 0° 43' 21" E m N 0° 52' 50" W r	40.88' m 40.88' r
D =	N 0° 43' 21" E m N 0° 52' 50" W r	41.26' m 41.26' r

BASIS OF BEARINGS:
 N $1^{\circ}32'00''$ W, THE EAST
 LINE OF THE NE 1/4, SEC 29,
 AS SHOWN ON MB 2/27.

Volume 2 Record of Survey Page 15