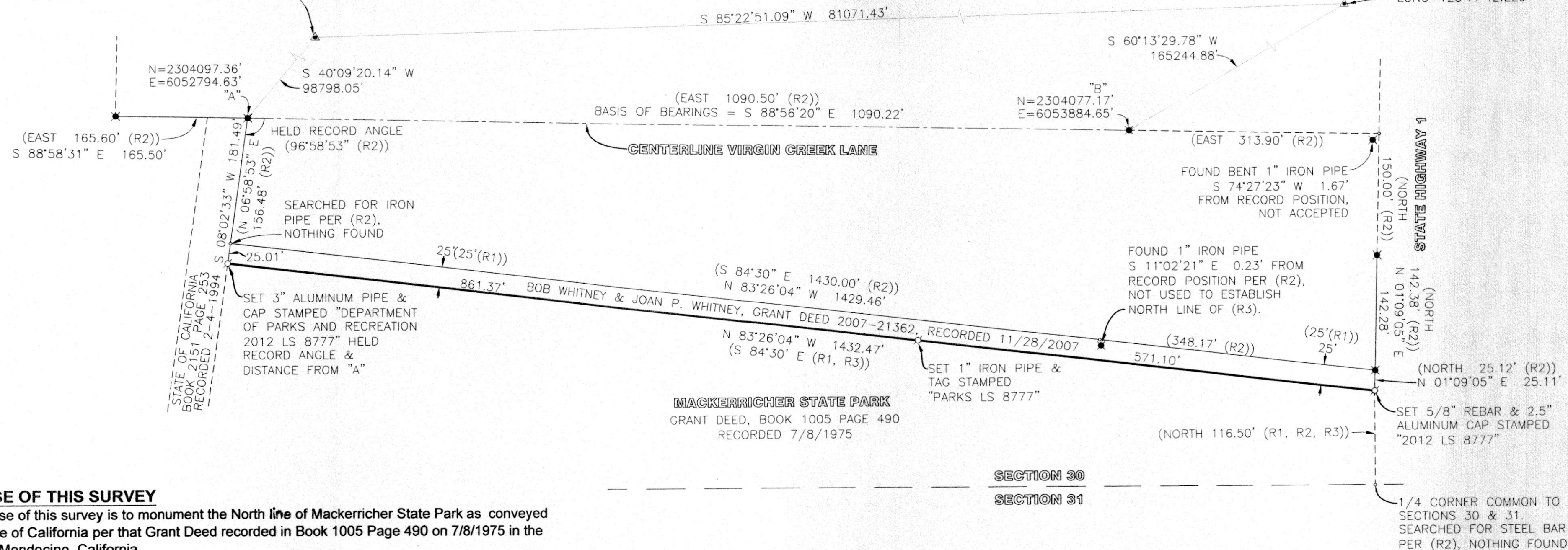


CORS STATION
PID=DN7548 LILRVRAIR_CN2006
LAT=39°15'40.579" LONG=123°44'57.554"

CORS STATION
PID=DN7378 HOGHOLERDGCN2004
LAT=39°42'25.535" LONG=123°17'42.229"



PURPOSE OF THIS SURVEY

The purpose of this survey is to monument the North line of Mackerricher State Park as conveyed to the State of California per that Grant Deed recorded in Book 1005 Page 490 on 7/8/1975 in the County of Mendocino, California.

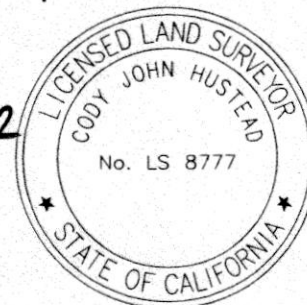
BASIS OF BEARINGS

The Basis of Bearings of this survey is based on California State Plane Coordinates Zone 2 (Epoch 2010.0000) as determined by GPS observations between found monuments "A" & "B" along the centerline of Virgin Creek Lane (shown hereon as S 88°56'20" E). A post processed OPUS solution was used to calculate coordinates based on Continuous Operating Reference Stations as shown hereon.

SURVEYOR'S STATEMENT

This map correctly represents a survey made by me or under my direction in conformance with the requirements of the Professional Land Surveyors' Act at the request of California State Parks in May 2012.

Cody John Hustead
Cody John Hustead, P.L.S. No. 8777 Date: 10/3/2012
License expiration date: 12/31/2012



COUNTY SURVEYOR'S STATEMENT

This map has been examined in accordance with Section 8766 of the Professional Land Surveyors' Act this 25th day of October, 2012.

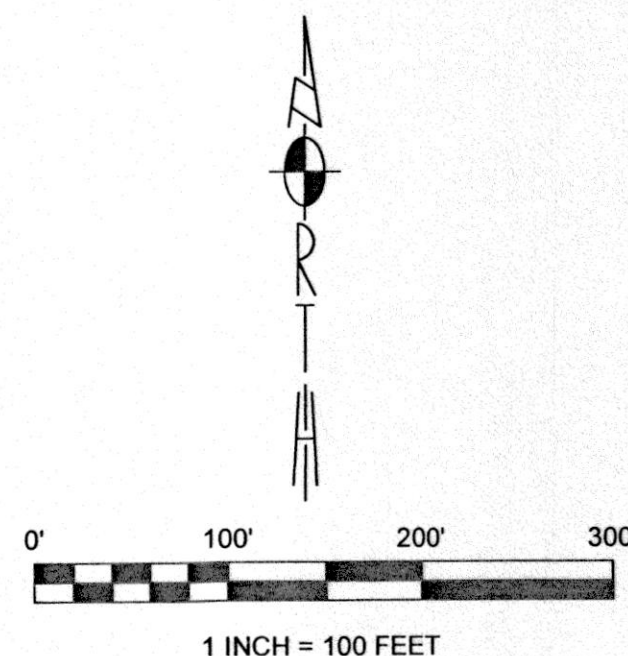
Howard N. Dashiell
Howard Dashiell, County Surveyor
P.L.S. No. 7148
License expiration date: 6/30/2013



RECORDER'S STATEMENT

Filed this 5th day of November, 2012, at 8:23 A.M.,
in Maps, Drawer 82, Page 28, M.C.R.,
at the request of the Department of Parks and Recreation.
Susan M. Ranochak
Assessor, County Clerk-Recorder

by *Kimberly Covella*, Deputy
Note: Official State Business, no fee required per Government Code Section 6103



LEGEND

- ▲ CORS CONTROL
- ✕ FOUND 1" IRON PIPE PER (R2)
- SET MONUMENT AS NOTED
- DIMENSION POINT
- () RECORD INFORMATION
- LINE NOT SURVEYED

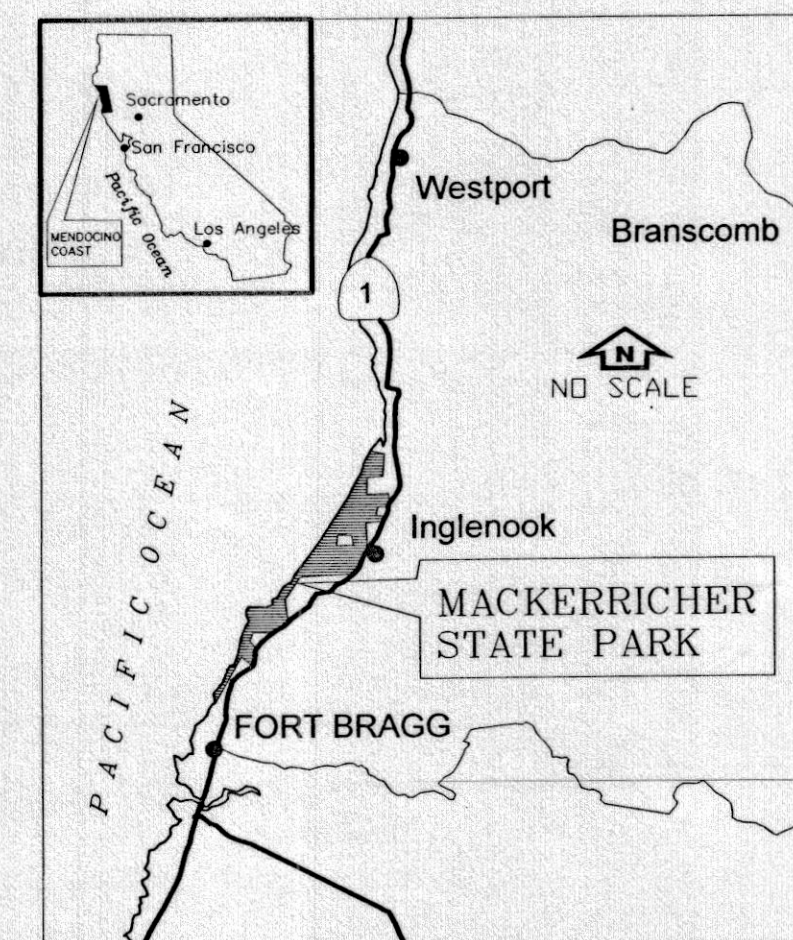
REFERENCES

(R1) GRANT DEED 2007-21362, RECORDED 11-28-2007
(R2) PARCEL MAP, MAP CASE 2, DRAWER 6, PAGE 49
(R3) GRANT DEED BOOK 1005, PAGE 490, RECORDED 7-8-1975
ALL RECORD DISTANCES SHOWN HEREON ARE GROUND
ALL MEASURED DISTANCES SHOWN HEREON ARE GRID

NOTE

All measured distances shown hereon are Grid (California Coordinate System of 1983, Zone 2). All record distances are Ground. To obtain ground distances divide the grid distance by the project specific combination factor of 0.999940162

ROS 32-12



RECORD OF SURVEY

A PORTION OF SECTION 30, TOWNSHIP 19 NORTH, RANGE 17 WEST
MOUNT DIABLO BASELINE AND MERIDIAN,
COUNTY OF MENDOCINO, STATE OF CALIFORNIA
SURVEYED IN AUGUST 2012 BY CODY JOHN HUSTEAD PLS 8777
FOR THE CALIFORNIA DEPARTMENT OF PARKS AND RECREATION

SHEET 1 OF 1

MAPS, DRAWER: 82 PAGE: 28