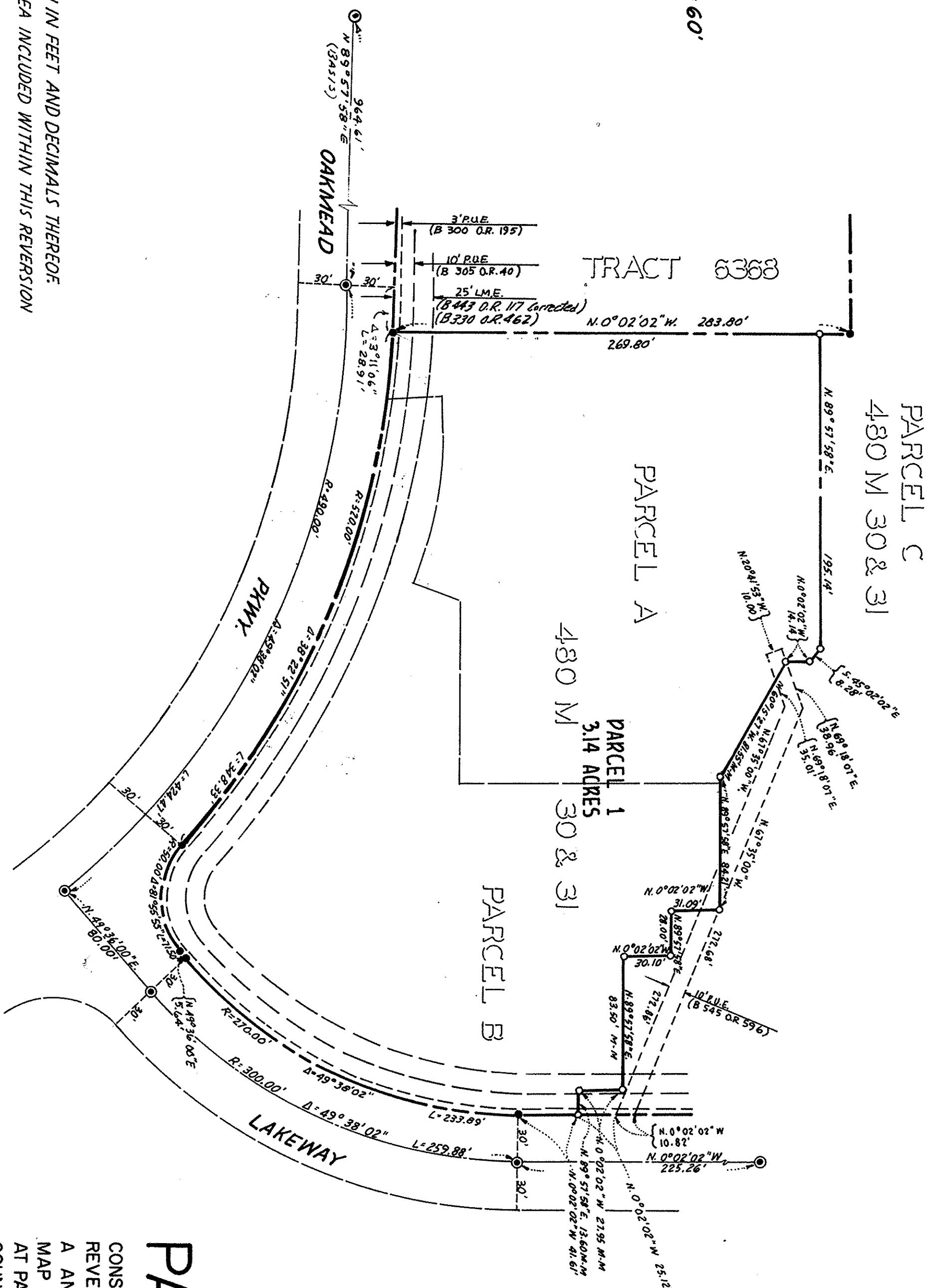
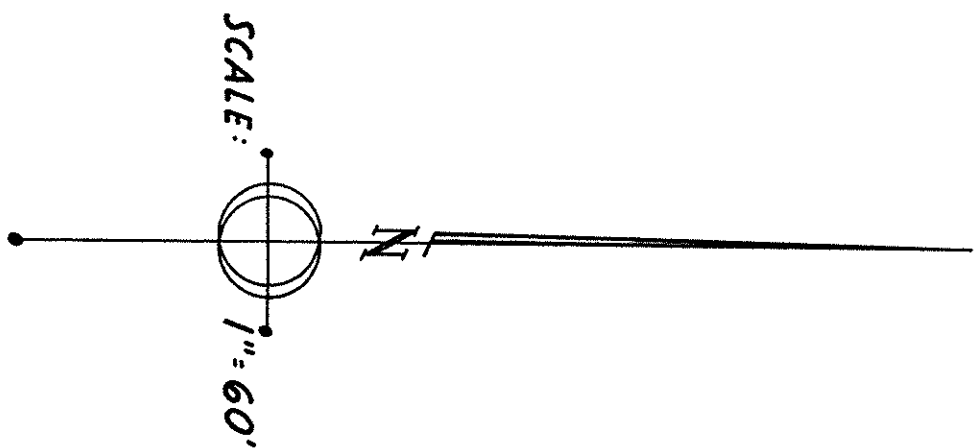


**BASIS OF BEARINGS**  
THE BEARING (N. 89° 57' 58" E.) ON THE MONUMENT LINE OF  
OAKMEAD PARKWAY AS SHOWN ON THE PARCEL MAP RECORDED  
IN BOOK 395 OF MAPS, AT PAGE 15, WAS TAKEN AS THE  
BASIS OF BEARINGS SHOWN HEREON.



**NOTES AND LEGEND**  
ALL DISTANCES AND DIMENSIONS ARE SHOWN IN FEET AND DECIMALS THEREOF.  
THE DISTINCTIVE BORDER INDICATES THE AREA INCLUDED WITHIN THIS REVERSION  
TO ACREAGE.

- 3/4" IRON PIPE SET BY 452 M, 8 1/2" 9, 432 M 41 1/2, AND 353 M 15.
- 3/4" IRON PIPE TO BE SET

● STREET MONUMENT FOUND  
— L.M.E. LANDSCAPE MAINTENANCE EASEMENT  
— P.U.E. PUBLIC UTILITIES EASEMENT

--- DISTINCTIVE BORDER  
--- PROPERTY LINE TO BE ABANDONED

**PARCEL MAP**  
CONSISTING OF TWO SHEETS BEING A  
REVERSION TO ACREAGE OF PARCELS  
A AND B AS SHOWN ON THE PARCEL  
MAP RECORDED IN BOOK 480 OF MAPS  
AT PAGES 30 AND 31, SANTA CLARA  
COUNTY, CALIFORNIA  
CITY OF SUNNYVALE  
NOVEMBER, 1981  
SCALE: 1" = 60'

**WMW INC.** 1087 So. WINCHESTER BLVD.  
SAN JOSE, CALIFORNIA

CIVIL ENGINEERS • LAND SURVEYORS  
ENVIRONMENTAL PLANNERS

SHEET 2 OF 2

REV. 10-3-81

REN-5