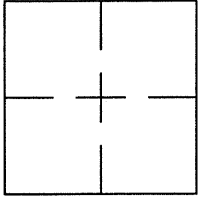


CORNER RECORDDocument Number CR 8224City of OAKLANDCounty of ALAMEDA, CaliforniaBrief Legal Description WELL MONUMENT LOCATED WITHIN TELEGRAPH AVE AND 22ND STREET.**CORNER RECORD**

Government Corner ☐ Control ☒
 Meander ☐ Property ☐
 Rancho ☐ Other ☐
 Date of Survey 2/18/16

COORDINATES
(Optional)

N. _____
 E. _____
 Zone _____ Datum _____
 Elev. _____

Corner — Left as found ☒ Found and tagged ☐ Established ☐ Reestablished ☐ Rebuilt ☐

Identification and type of corner found: Evidence used to identify or procedure used to establish or reestablish the corner:
FOUND BRASS DISC IN WELL MONUMENT INTERSECTION OF TELEGRAPH AVE & 22ND ST.

AS SHOWN ON CITY OF OAKLAND MONUMENT MAP, PAGE 238

NO CITY MONUMENT DESIGNATION NUMBER AT SUBJECT LOCATION.

THIS POINT WAS FOUND IN GOOD CONDITION AFTER A CONSTRUCTION PROJECT
IN THE VICINITY.

A description of the physical condition of the monument as found and as set or reset: _____

FOUND AND SET POINTS AS SHOWN ON PAGE 2.

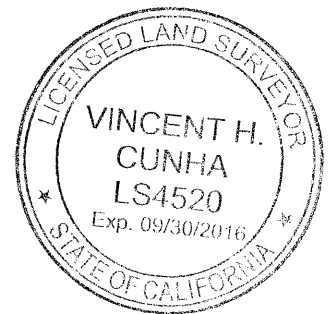
THESE TIES ARE FOR THE PURPOSE OF PERPETUATING THE FOUND MONUMENTATION.

NO CLAIM IS MADE AS TO THE RELATIONSHIP OF THE POINTS OR LINES SHOWN HEREON
TO TRUE BOUNDARY LOCATIONS.

SURVEYOR'S STATEMENT

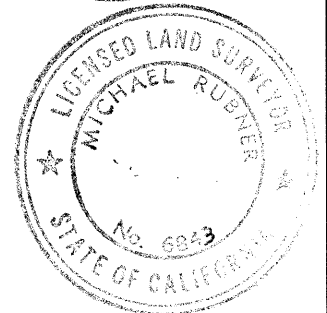
This Corner Record was prepared by me or under my direction in conformance with
 the Land Surveyors' Act on MARCH 4, 2016.

Signed Vincent H. Cunha L.S. Number LS 4520
VINCENT H. CUNHA

**COUNTY SURVEYOR'S STATEMENT**

This Corner Record was received 9 MARCH 2016 and examined
 and filed 30 MARCH 2016.

Signed Michael Rubner Title COUNTY SURVEYOR

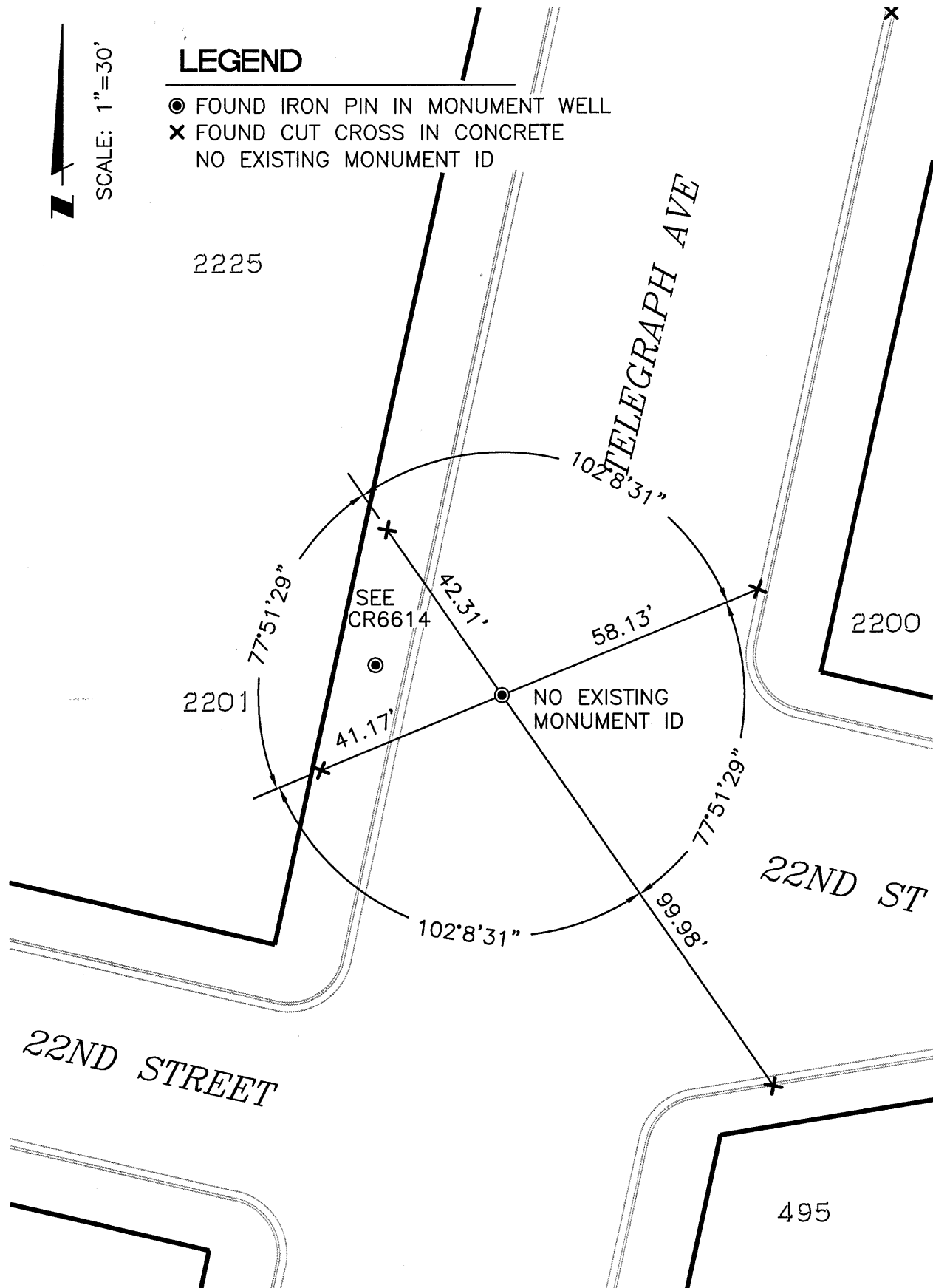


County Surveyor's Comment _____

SEE CR 6613



◎ FOUND IRON PIN IN MONUMENT WELL
 ✕ FOUND CUT CROSS IN CONCRETE
 NO EXISTING MONUMENT ID



214072-Telegraph-CR10