

Pine Glade Tract

No. of Lots 40 Mapped December, 1956

Water System Installed By * Permitees

Road Built By Permitees

Electrical Service Available Telephone Available

Access Private dirt road, short distance from county road.

Lots Front On Near Highway 395

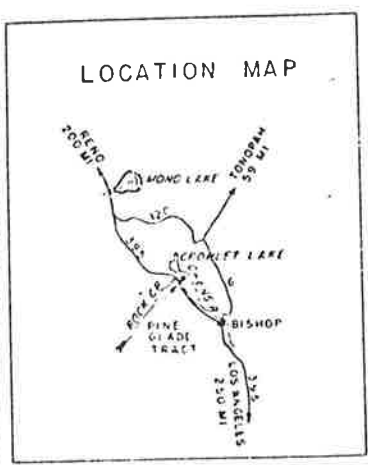
Terrain In Subdivision Varies from steep sidehill to level with moderate amount of tree growth. At an elevation of 7,000'±.

Comments * Water system installed in about 1965 by the Permitees. The current replacement cost of the system has been estimated at \$2,700 per lot. Each Permittee pays \$50.00 per year to operate the system. Lots 7, 11 and 15 are not in the water association. No requirements for sewers in this area. Most cabins are on septic tanks, others have outhouses. Permitees pay one of the cabin owners \$25 per year to plow snow.

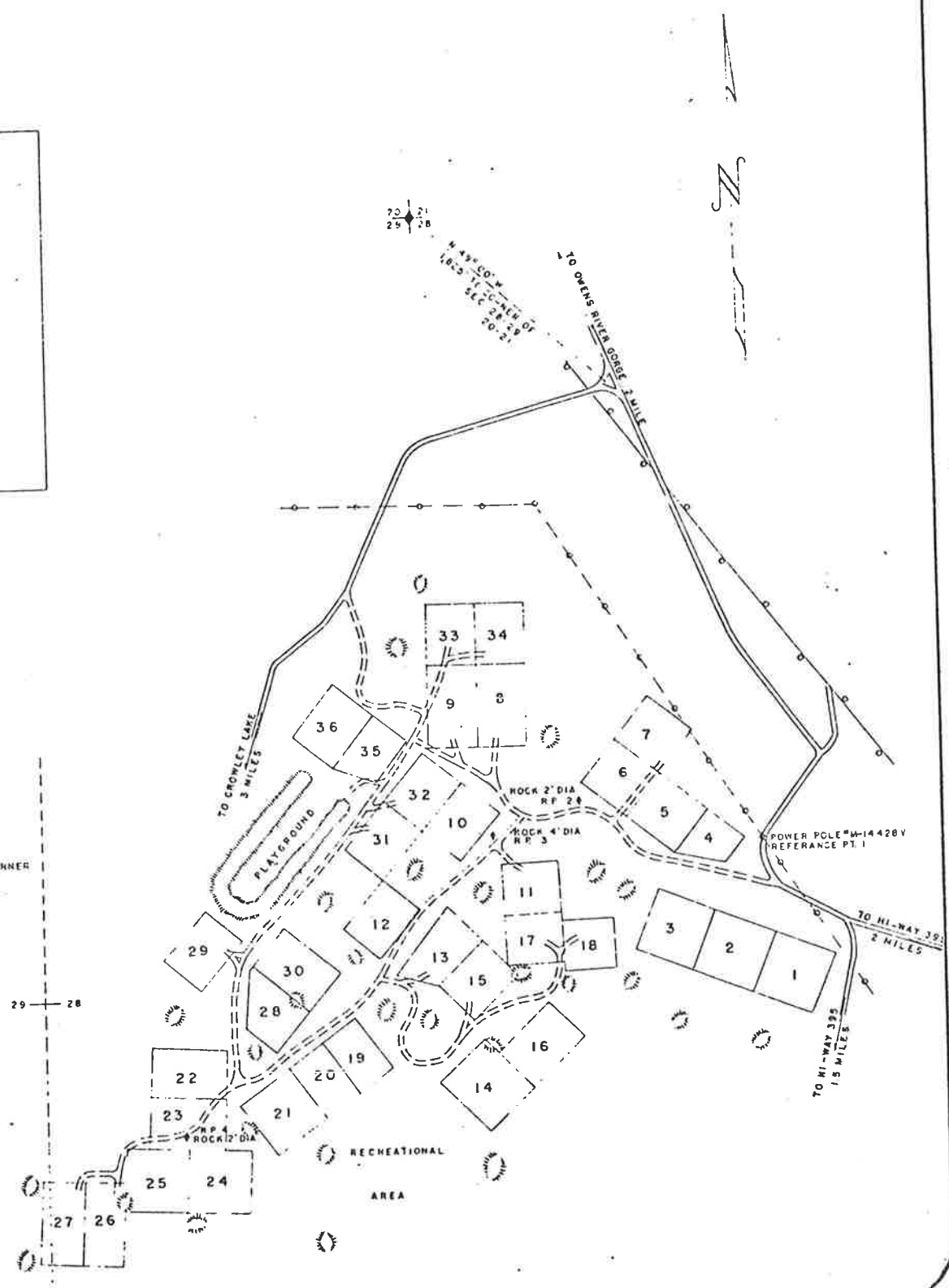
U.S. DEPARTMENT OF AGRICULTURE
FOREST SERVICE
INYO NATIONAL FOREST
ROCK CREEK RECREATION AREA
PINE GLADE TRACT
SECS. 28, 29, T. 4S R. 30E. M.D.M.
CALIFORNIA

MAGNETIC DECLINATION 17°
SCALE: 1" = 200'

U.S. FOREST SERVICE
PRINTABLE SURVEY
BY GRONCKI & R.M. WILSON, DEC. 1956



- LEGEND**
- MAINTAINED GRAVEL ROAD
 - UNIMPROVED ROAD
 - HOME SITE NUMBER
 - POWER LINE
 - TELEPHONE LINE
 - HILL
 - R.R. REFERENCE POINT
 - SECTION LINE & QUARTER CORNER

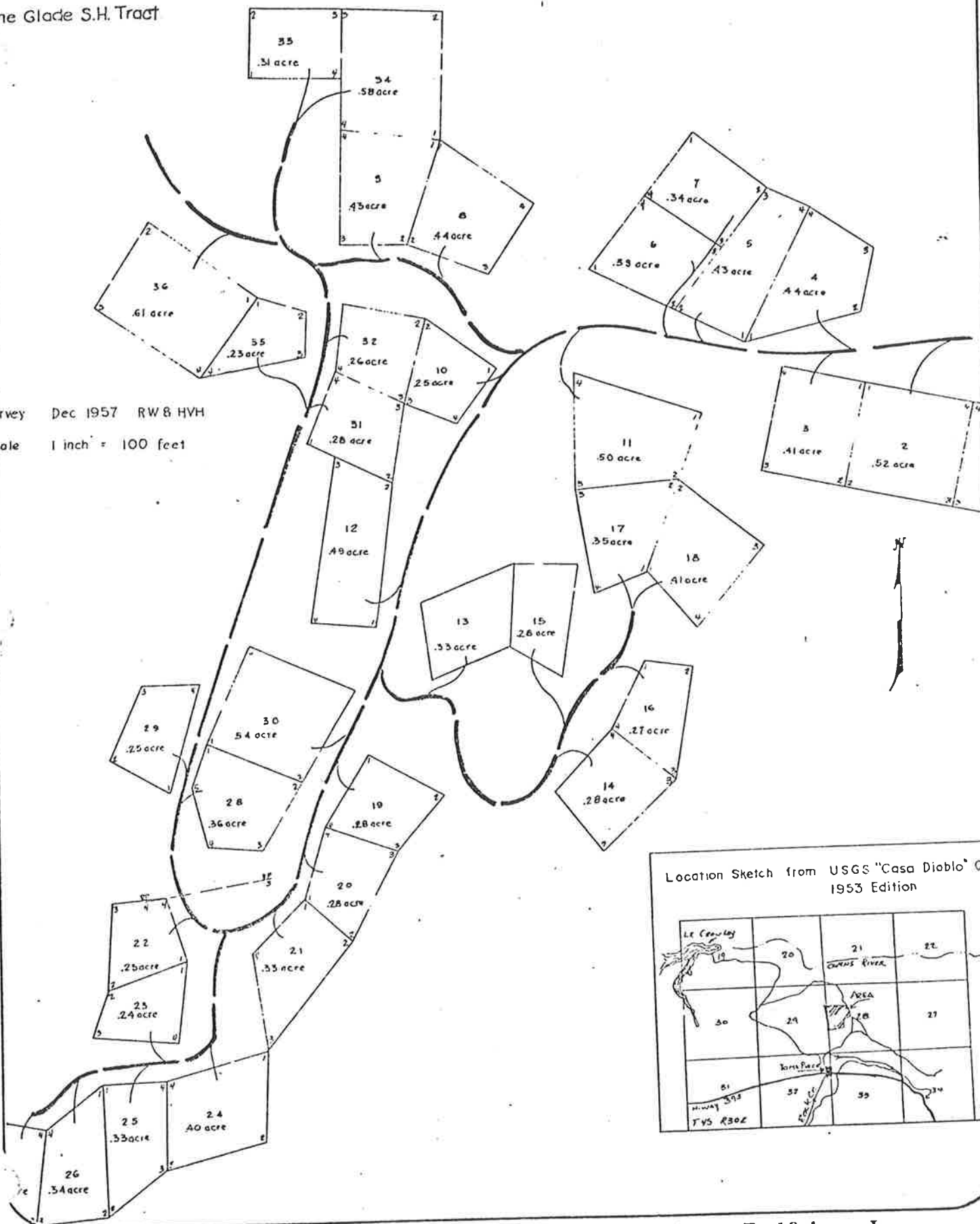


SES, Inyo

ine Glade S.H. Tract

urvey Dec 1957 RW & HVH

cale 1 inch = 100 feet



Location Sketch from USGS "Casa Diablo" Qu 1953 Edition

