

MAP
OF THE
ALTA VISTA RANCHO
THE PROPERTY OF
R. F. Robertson

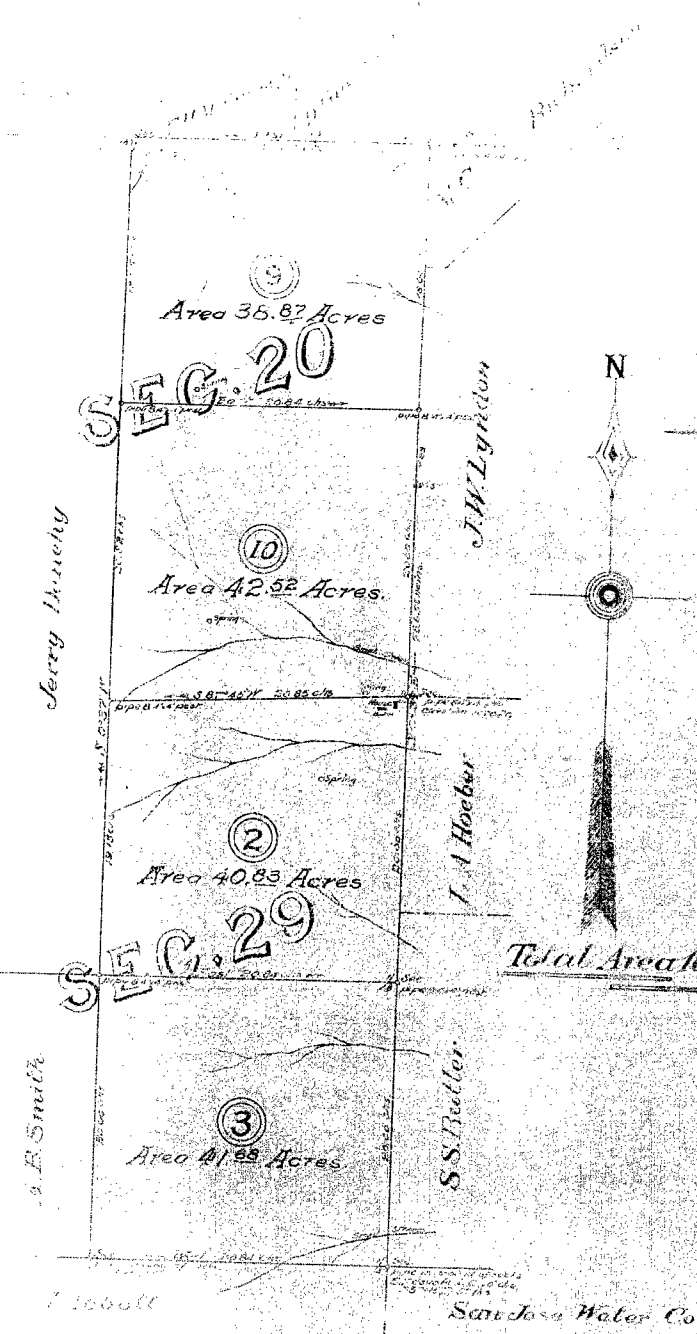
In Sections 20 & 29, T. 8 S. R. 1 W.

SANTA CLARA CO.

Surveyed April 1904 by Carl M. Barker
D. Surveyor (C.B.)
SCALE: 3 chains = 1 inch

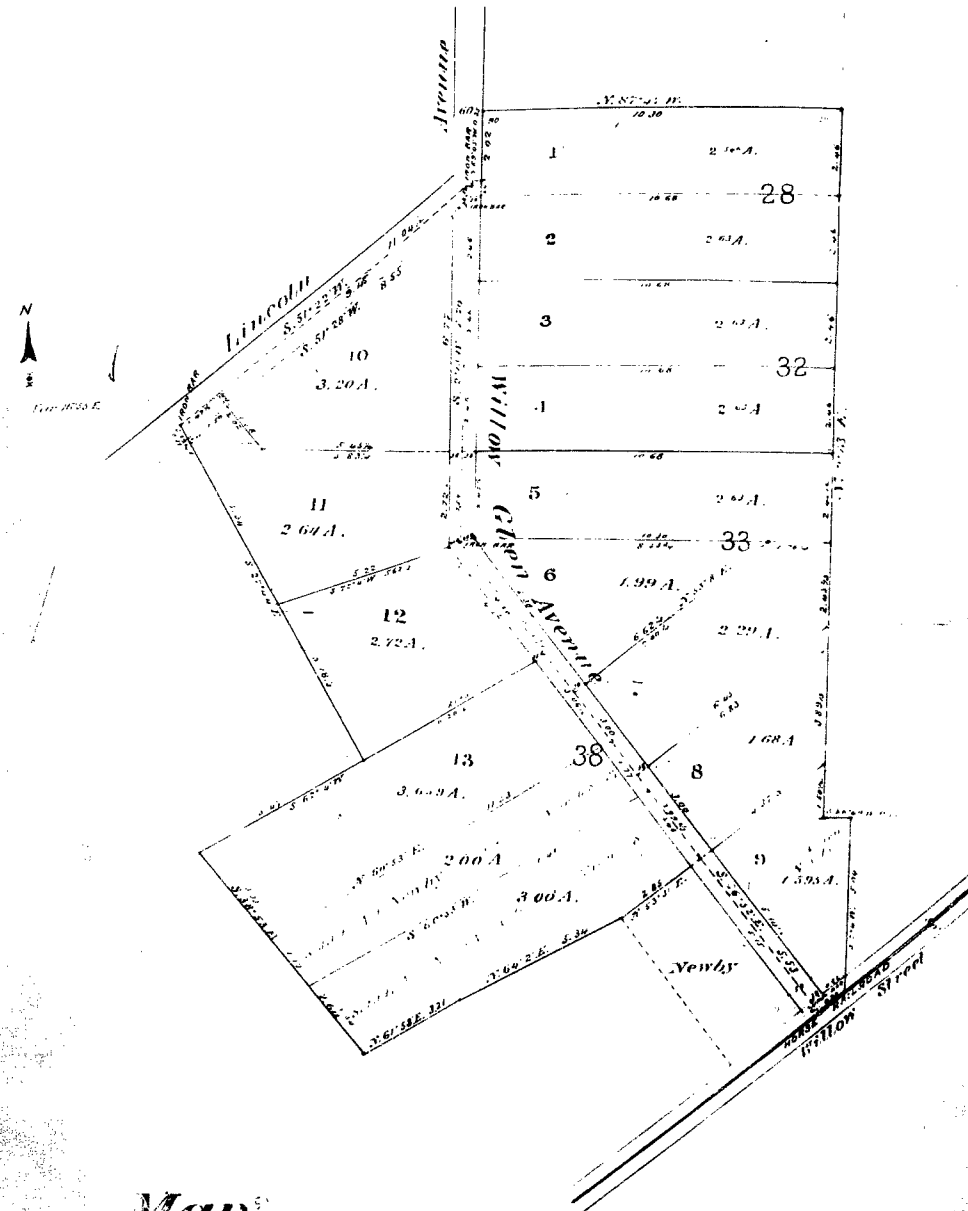
Total Area 163.90 Acres





ALTA VISTA RANCHO
 THE PROPERTY OF
 R.F. Robertson
 In Sections 20 & 29, T.8S. R.1W.
 SANTA CLARA CO.
 Surveyed April 1901 by Curtis M. Barker
 & Surveyors C.M.B.
 SCALE: 5 chains = 1 inch





Map
OF

Fleming's Subdivision

of Lots 28, 32, 33 and 38
OF THE

Odd Fellows Savings Bank Tract

Surveyed February 1887 by

Herrmann Bros

Surveyors &c.

SAN JOSE

Scale, 2 ch. to 1 inch.

RECORDED AT REQUEST OF
Fleming Bros.
in Book P. Maps 51.
at San Jose March 11th 87.
at 2. 10
By *Charles P. Owsen*
Clerk of the County of Santa Clara,
Cal.

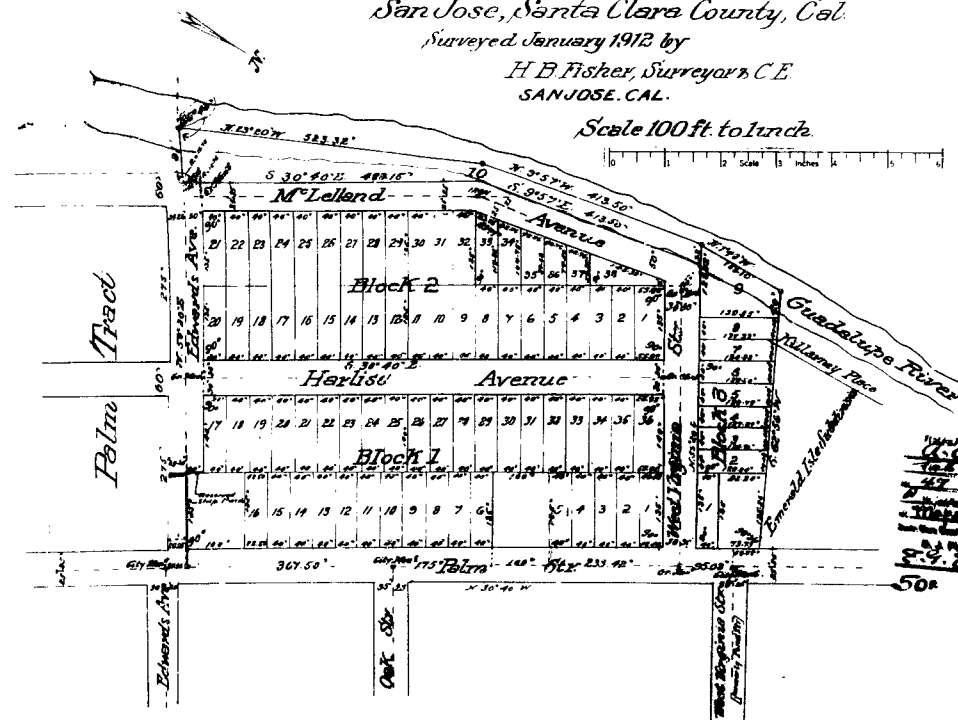
MAP OF THE CONKLING AND COL SUBDIVISION

San Jose, Santa Clara County, Cal.

Surveyed January 1912 by

H. B. Fisher, Surveyor & C.E.
SAN JOSE, CAL.

Scale 100 ft. to inch



Certificate

We, the undersigned owners of the first volume of the map, do hereby certify that the map is a true and correct copy of the original map, and that the same has been deposited in the office of the County Clerk of Santa Clara County, California, for the purpose of recording the same.

H. B. Fisher
Surveyor & C.E.

County of Santa Clara, S.S.
State of California

On this 26th day of January, 1912, I, the undersigned, County Clerk of Santa Clara County, California, do hereby certify that the map is a true and correct copy of the original map, and that the same has been deposited in the office of the County Clerk of Santa Clara County, California, for the purpose of recording the same.

In Witness Whereof, I have hereunto set my hand and official seal this 26th day of January, 1912.

Henry Public in and for said County of Santa Clara,
State of California.

RECORDED
JAN 26 1912
COUNTY CLERK
SANTA CLARA COUNTY
CALIFORNIA

The within Map was
disapproved by the Mayor and
Common Council of the City of
San Jose.

Feb. 25 1912

Wm. L. Lusk
City Clerk.

N/82

2969-A

2969A

Course	Dist.	To State
3.71-5.07	2.1	1.60
5.07-5.34	5.04	1.59
5.34-5.61	0.51	1.58
5.61-5.88	0.57	1.57
5.88-6.15	0.51	1.56
6.15-6.42	0.51	1.55
6.42-6.69	0.51	1.54
6.69-6.96	0.51	1.53
6.96-7.23	0.51	1.52
7.23-7.50	0.51	1.51
7.50-7.77	0.51	1.50
7.77-8.04	0.51	1.49
8.04-8.31	0.51	1.48
8.31-8.58	0.51	1.47
8.58-8.85	0.51	1.46
8.85-9.12	0.51	1.45
9.12-9.39	0.51	1.44
9.39-9.66	0.51	1.43
9.66-9.93	0.51	1.42
9.93-10.20	0.51	1.41
10.20-10.47	0.51	1.40
10.47-10.74	0.51	1.39
10.74-11.01	0.51	1.38
11.01-11.28	0.51	1.37
11.28-11.55	0.51	1.36
11.55-11.82	0.51	1.35
11.82-12.09	0.51	1.34
12.09-12.36	0.51	1.33
12.36-12.63	0.51	1.32
12.63-12.90	0.51	1.31
12.90-13.17	0.51	1.30
13.17-13.44	0.51	1.29
13.44-13.71	0.51	1.28
13.71-13.98	0.51	1.27
13.98-14.25	0.51	1.26
14.25-14.52	0.51	1.25
14.52-14.79	0.51	1.24
14.79-15.06	0.51	1.23
15.06-15.33	0.51	1.22
15.33-15.60	0.51	1.21
15.60-15.87	0.51	1.20
15.87-16.14	0.51	1.19
16.14-16.41	0.51	1.18
16.41-16.68	0.51	1.17
16.68-16.95	0.51	1.16
16.95-17.22	0.51	1.15
17.22-17.49	0.51	1.14
17.49-17.76	0.51	1.13
17.76-18.03	0.51	1.12
18.03-18.30	0.51	1.11
18.30-18.57	0.51	1.10
18.57-18.84	0.51	1.09
18.84-19.11	0.51	1.08
19.11-19.38	0.51	1.07
19.38-19.65	0.51	1.06
19.65-19.92	0.51	1.05
19.92-20.19	0.51	1.04
20.19-20.46	0.51	1.03
20.46-20.73	0.51	1.02
20.73-21.00	0.51	1.01
21.00-21.27	0.51	1.00
21.27-21.54	0.51	0.99
21.54-21.81	0.51	0.98
21.81-22.08	0.51	0.97
22.08-22.35	0.51	0.96
22.35-22.62	0.51	0.95
22.62-22.89	0.51	0.94
22.89-23.16	0.51	0.93
23.16-23.43	0.51	0.92
23.43-23.70	0.51	0.91
23.70-23.97	0.51	0.90
23.97-24.24	0.51	0.89
24.24-24.51	0.51	0.88
24.51-24.78	0.51	0.87
24.78-25.05	0.51	0.86
25.05-25.32	0.51	0.85
25.32-25.59	0.51	0.84
25.59-25.86	0.51	0.83
25.86-26.13	0.51	0.82
26.13-26.40	0.51	0.81
26.40-26.67	0.51	0.80
26.67-26.94	0.51	0.79
26.94-27.21	0.51	0.78
27.21-27.48	0.51	0.77
27.48-27.75	0.51	0.76
27.75-28.02	0.51	0.75
28.02-28.29	0.51	0.74
28.29-28.56	0.51	0.73
28.56-28.83	0.51	0.72
28.83-29.10	0.51	0.71
29.10-29.37	0.51	0.70
29.37-29.64	0.51	0.69
29.64-29.91	0.51	0.68

H. D. Scripture

O. W. Meysenburg

[illegible]

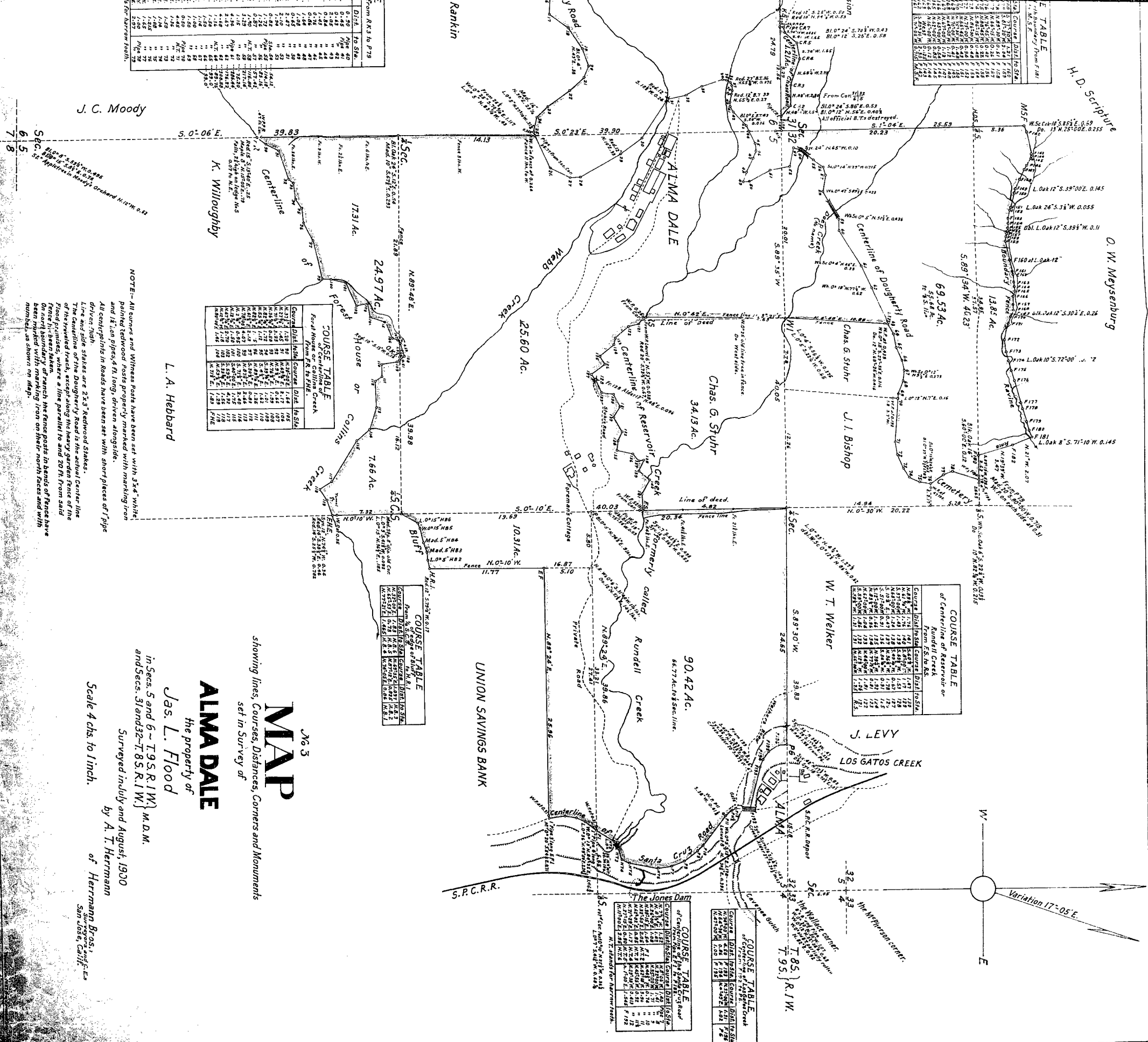
COURSE TABLE of Centerline of Lostgate Creek From F192 to P6.					
Course	Dist.	to Sta.	Course	Dist.	to Sta.
N. 74° 00' E.	4.50	F 193	N. 53° 00' E.	1.91	F 196
N. 64° 54' W.	0.86	F 194	N. 43° 12' E.	4.02	P 6
N. 47° 00' W.	1.00	F 195			

[illegible]

Course	Dist. to Sta.		Course		Dist. to Sta.	
	to edge of bluff	to H.R.I	to edge of bluff	to H.R.I	to edge of bluff	to H.R.I
N. 52° 00' E.	1.83	H. 6.5	N. 69° 35' E.	1.037	H. 8.3	
N. 65° 53' E.	0.73	H. 8.5	N. 70° 12' E.	0.925	H. 8.2	
N. 72° 21' E.	1.465	H. 8.4	N. 75° 52' E.	0.86	H. 8.1	

COURSE TABLE				
For a Month From F.R. to P.H.E.				
COURSE	Dist. from F.R.	COURSE	Dist.	To P.H.E.
A. 31	1.20	B. 22	1.52	105
C. 12	1.20	D. 13	1.52	105
E. 23	1.20	F. 14	1.52	105
G. 34	1.20	H. 15	1.52	105
I. 45	1.20	J. 16	1.52	105
K. 56	1.20	L. 17	1.52	105
M. 67	1.20	N. 18	1.52	105
O. 78	1.20	P. 19	1.52	105
Q. 89	1.20	R. 20	1.52	105
S. 90	1.20	T. 21	1.52	105
U. 01	1.20	V. 22	1.52	105
W. 12	1.20	X. 23	1.52	105
Y. 23	1.20	Z. 24	1.52	105
AA. 34	1.20	AB. 25	1.52	105
AC. 45	1.20	AD. 26	1.52	105
AE. 56	1.20	AF. 27	1.52	105
AG. 67	1.20	AH. 28	1.52	105
AI. 78	1.20	AJ. 29	1.52	105
AK. 89	1.20	AL. 30	1.52	105
AM. 90	1.20	AN. 31	1.52	105
AO. 01	1.20	AP. 32	1.52	105
AQ. 12	1.20	AR. 33	1.52	105
AS. 23	1.20	AT. 34	1.52	105
AW. 34	1.20	AX. 35	1.52	105
AY. 45	1.20	AZ. 36	1.52	105
BA. 56	1.20	BB. 37	1.52	105
BC. 67	1.20	BD. 38	1.52	105
BE. 78	1.20	BF. 39	1.52	105
BG. 89	1.20	BH. 40	1.52	105
BI. 90	1.20	BJ. 41	1.52	105
BL. 01	1.20	BK. 42	1.52	105
BM. 12	1.20	BN. 43	1.52	105
BO. 23	1.20	BP. 44	1.52	105
BQ. 34	1.20	BR. 45	1.52	105
BS. 45	1.20	BT. 46	1.52	105
BU. 56	1.20	BV. 47	1.52	105
BW. 67	1.20	BX. 48	1.52	105
BY. 78	1.20	BZ. 49	1.52	105
CA. 89	1.20	CB. 50	1.52	105
CC. 90	1.20	CD. 51	1.52	105
CE. 01	1.20	CE. 52	1.52	105
CF. 12	1.20	CF. 53	1.52	105
CG. 23	1.20	CG. 54	1.52	105
CH. 34	1.20	CH. 55	1.52	105
CI. 45	1.20	CI. 56	1.52	105
CJ. 56	1.20	CJ. 57	1.52	105
CK. 67	1.20	CK. 58	1.52	105
CL. 78	1.20	CL. 59	1.52	105
CM. 89	1.20	CM. 60	1.52	105
CN. 90	1.20	CN. 61	1.52	105
CO. 01	1.20	CO. 62	1.52	105
CP. 12	1.20	CP. 63	1.52	105
CQ. 23	1.20	CQ. 64	1.52	105
CR. 34	1.20	CR. 65	1.52	105
CS. 45	1.20	CS. 66	1.52	105
CT. 56	1.20	CT. 67	1.52	105
CU. 67	1.20	CU. 68	1.52	105
CV. 78	1.20	CV. 69	1.52	105
CW. 89	1.20	CW. 70	1.52	105
CX. 90	1.20	CX. 71	1.52	105
CY. 01	1.20	CY. 72	1.52	105
CZ. 12	1.20	CZ. 73	1.52	105
DA. 23	1.20	DA. 74	1.52	105
DB. 34	1.20	DB. 75	1.52	105
DC. 45	1.20	DC. 76	1.52	105
DD. 56	1.20	DD. 77	1.52	105
DE. 67	1.20	DE. 78	1.52	105
DF. 78	1.20	DF. 79	1.52	105
DG. 89	1.20	DF. 80	1.52	105
DH. 90	1.20	DH. 8		

From RK3 to P79	Dist.	To Sta.
0.45	Pipe 91	
0.50	Pipe 91	
0.55	Pipe 91	
0.60	Pipe 91	
0.65	Pipe 91	
0.70	Pipe 91	
0.75	Pipe 91	
0.80	Pipe 91	
0.85	Pipe 91	
0.90	Pipe 91	
0.95	Pipe 91	
1.00	Pipe 91	
1.05	Pipe 91	
1.10	Pipe 91	
1.15	Pipe 91	
1.20	Pipe 91	
1.25	Pipe 91	
1.30	Pipe 91	
1.35	Pipe 91	
1.40	Pipe 91	
1.45	Pipe 91	
1.50	Pipe 91	
1.55	Pipe 91	
1.60	Pipe 91	
1.65	Pipe 91	
1.70	Pipe 91	
1.75	Pipe 91	
1.80	Pipe 91	
1.85	Pipe 91	
1.90	Pipe 91	
1.95	Pipe 91	
2.00	Pipe 91	
2.05	Pipe 91	
2.10	Pipe 91	
2.15	Pipe 91	
2.20	Pipe 91	
2.25	Pipe 91	
2.30	Pipe 91	
2.35	Pipe 91	
2.40	Pipe 91	
2.45	Pipe 91	
2.50	Pipe 91	
2.55	Pipe 91	
2.60	Pipe 91	
2.65	Pipe 91	
2.70	Pipe 91	
2.75	Pipe 91	
2.80	Pipe 91	
2.85	Pipe 91	
2.90	Pipe 91	
2.95	Pipe 91	
3.00	Pipe 91	
3.05	Pipe 91	
3.10	Pipe 91	
3.15	Pipe 91	
3.20	Pipe 91	
3.25	Pipe 91	
3.30	Pipe 91	
3.35	Pipe 91	
3.40	Pipe 91	
3.45	Pipe 91	
3.50	Pipe 91	
3.55	Pipe 91	
3.60	Pipe 91	
3.65	Pipe 91	
3.70	Pipe 91	
3.75	Pipe 91	
3.80	Pipe 91	
3.85	Pipe 91	
3.90	Pipe 91	
3.95	Pipe 91	
4.00	Pipe 91	
4.05	Pipe 91	
4.10	Pipe 91	
4.15	Pipe 91	
4.20	Pipe 91	
4.25	Pipe 91	
4.30	Pipe 91	
4.35	Pipe 91	
4.40	Pipe 91	
4.45	Pipe 91	
4.50	Pipe 91	
4.55	Pipe 91	
4.60	Pipe 91	
4.65	Pipe 91	
4.70	Pipe 91	
4.75	Pipe 91	
4.80	Pipe 91	
4.85	Pipe 91	
4.90	Pipe 91	
4.95	Pipe 91	
5.00	Pipe 91	
5.05	Pipe 91	
5.10	Pipe 91	
5.15	Pipe 91	
5.20	Pipe 91	
5.25	Pipe 91	
5.30	Pipe 91	
5.35	Pipe 91	
5.40	Pipe 91	
5.45	Pipe 91	
5.50	Pipe 91	
5.55	Pipe 91	
5.60	Pipe 91	
5.65	Pipe 91	
5.70	Pipe 91	
5.75	Pipe 91	
5.80	Pipe 91	
5.85	Pipe 91	
5.90	Pipe 91	
5.95	Pipe 91	
6.00	Pipe 91	
6.05	Pipe 91	
6.10	Pipe 91	
6.15	Pipe 91	
6.20	Pipe 91	
6.25	Pipe 91	
6.30	Pipe 91	
6.35	Pipe 91	
6.40	Pipe 91	
6.45	Pipe 91	
6.50	Pipe 91	
6.55	Pipe 91	
6.60	Pipe 91	
6.65	Pipe 91	
6.70	Pipe 91	
6.75	Pipe 91	
6.80	Pipe 91	
6.85	Pipe 91	
6.90	Pipe 91	
6.95	Pipe 91	
7.00	Pipe 91	
7.05	Pipe 91	
7.10	Pipe 91	
7.15	Pipe 91	
7.20	Pipe 91	
7.25	Pipe 91	
7.30	Pipe 91	
7.35	Pipe 91	
7.40	Pipe 91	
7.45	Pipe 91	
7.50	Pipe 91	
7.55	Pipe 91	
7.60	Pipe 91	
7.65	Pipe 91	
7.70	Pipe 91	
7.75	Pipe 91	
7.80	Pipe 91	
7.85	Pipe 91	
7.90	Pipe 91	
7.95	Pipe 91	
8.00	Pipe 91	
8.05	Pipe 91	
8.10	Pipe 91	
8.15	Pipe 91	
8.20	Pipe 91	
8.25	Pipe 91	
8.30	Pipe 91	
8.35	Pipe 91	
8.40	Pipe 91	
8.45	Pipe 91	
8.50	Pipe 91	
8.55	Pipe 91	
8.60	Pipe 91	
8.65	Pipe 91	
8.70	Pipe 91	
8.75	Pipe 91	
8.80	Pipe 91	
8.85	Pipe 91	
8.90	Pipe 91	
8.95	Pipe 91	
9.00	Pipe 91	
9.05	Pipe 91	
9.10	Pipe 91	
9.15	Pipe 91	
9.20	Pipe 91	
9.25	Pipe 91	
9.30	Pipe 91	
9.35	Pipe 91	
9.40	Pipe 91	
9.45	Pipe 91	
9.50	Pipe 91	
9.55	Pipe 91	
9.60	Pipe 91	
9.65	Pipe 91	
9.70	Pipe 91	
9.75	Pipe 91	
9.80	Pipe 91	
9.85	Pipe 91	
9.90	Pipe 91	
9.95	Pipe 91	
10.00	Pipe 91	
10.05	Pipe 91	
10.10	Pipe 91	
10.15	Pipe 91	
10.20	Pipe 91	
10.25	Pipe 91	
10.30	Pipe 91	
10.35	Pipe 91	
10.40	Pipe 91	
10.45	Pipe 91	
10.50	Pipe 91	
10.55	Pipe 91	
10.60	Pipe 91	
10.65	Pipe 91	
10.70	Pipe 91	
10.75	Pipe 91	
10.80	Pipe 91	
10.85	Pipe 91	
10.90	Pipe 91	
10.95	Pipe 91	
11.00	Pipe 91	
11.05	Pipe 91	
11.10	Pipe 91	
11.15	Pipe 91	
11.20	Pipe 91	
11.25	Pipe 91	
11.30	Pipe 91	
11.35	Pipe 91	
11.40	Pipe 91	
11.45	Pipe 91	
11.50	Pipe 91	
11.55	Pipe 91	
11.60	Pipe 91	
11.65	Pipe 91	
11.70	Pipe 91	
11.75	Pipe 91	
11.80	Pipe 91	
11.85	Pipe 91	
11.90	Pipe 91	
11.95	Pipe 91	
12.00	Pipe 91	
12.05	Pipe 91	
12.10	Pipe 91	
12.15	Pipe 91	
12.20	Pipe 91	
12.25	Pipe 91	
12.30	Pipe 91	
12.35	Pipe 91	
12.40	Pipe 91	
12.45	Pipe 91	
12.50	Pipe 91	
12.55	Pipe 91	
12.60	Pipe 91	
12.65	Pipe 91	
12.70	Pipe 91	
12.75	Pipe 91	
12.80	Pipe 91	
12.85	Pipe 91	
12.90	Pipe 91	
12.95	Pipe 91	
13.00	Pipe 91	
13.05	Pipe 91	
13.10	Pipe 91	
13.15	Pipe 91	
13.20	Pipe 91	
13.25	Pipe 91	
13.30	Pipe 91	
13.35	Pipe 91	
13.40	Pipe 91	
13.45	Pipe 91	
13.50	Pipe 91	
13.55	Pipe 91	
13.60	Pipe 91	
13.65	Pipe 91	
13.70	Pipe 91	
13.75	Pipe 91	
13.80	Pipe 91	
13.85	Pipe 91	
13.90	Pipe 91	
13.95	Pipe 91	
14.00	Pipe 91	
14.05	Pipe 91	
14.10	Pipe 91	
14.15	Pipe 91	
14.20	Pipe 91	
14.25	Pipe 91	
14.30	Pipe 91	
14.35	Pipe 91	
14.40	Pipe 91	
14.45	Pipe 91	
14.50	Pipe 91	
14.55	Pipe 91	
14.60	Pipe 91	
14.65	Pipe 91	
14.70	Pipe 91	
14.75	Pipe 91	
14.80	Pipe 91	
14.85	Pipe 91	
14.90	Pipe 91	
14.95	Pipe 91	
15.00	Pipe 91	
15.05	Pipe 91	
15.10	Pipe 91	
15.15	Pipe 91	
15.20	Pipe 91	
15.25	Pipe 91	
15.30	Pipe 91	
15.35	Pipe 91	
15.40	Pipe 91	
15.45	Pipe 91	
15.50	Pipe 91	
15.55	Pipe 91	
15.60	Pipe 91	
15.65	Pipe 91	
15.70	Pipe 91	
15.75	Pipe 91	
15.80	Pipe 91	
15.85	Pipe 91	
15.90	Pipe 91	
15.95	Pipe 91	
16.00	Pipe 91	
16.05	Pipe 91	
16.10	Pipe 91	
16.15	Pipe 91	
16.20	Pipe 91	
16.25	Pipe 91	
16.30	Pipe 91	
16.35	Pipe 91	
16.40	Pipe 91	
16.45	Pipe 91	
16.50	Pipe 91	
16.55	Pipe 91	
16.60	Pipe 91	
16.65	Pipe 91	
16.70	Pipe 91	
16.75	Pipe 91	
16.80	Pipe 91	
16.85	Pipe 91	
16.90	Pipe 91	
16.95	Pipe 91	
17.00	Pipe 91	
17.05	Pipe 91	
17.10	Pipe 91	
17.15	Pipe 91	
17.20	Pipe 91	
17.25	Pipe 91	
17.30	Pipe 91	
17.35	Pipe 91	
17.40	Pipe 91	
17.45	Pipe 91	
17.50	Pipe 91	
17.55	Pipe 91	
17.60	Pipe 91	
17.65	Pipe 91	
17.70	Pipe 91	
17.75	Pipe 91	
17.80	Pipe 91	
17.85	Pipe 91	
17.90	Pipe 91	
17.95	Pipe 91	
18.00	Pipe 91	
18.05	Pipe 91	
18.10	Pipe 91	
18.15	Pipe 91	
18.20	Pipe 91	
18.25	Pipe 91	
18.30	Pipe 91	
18.35	Pipe 91	
18.40	Pipe 91	
18.45	Pipe 91	
18.50	Pipe 91	
18.55	Pipe 91	
18.60	Pipe 91	
18.65	Pipe 91	
18.70	Pipe 91	
18.75	Pipe 91	
18.80	Pipe 91	
18.85	Pipe 91	
18.90	Pipe 91	
18.95	Pipe 91	
19.00	Pipe 91	
19.05	Pipe 91	
19.10	Pipe 91	
19.15	Pipe 91	
19.20	Pipe 91	
19.25	Pipe 91	
19.30	Pipe 91	
19.35	Pipe 91	
19.40	Pipe 91	
19.45	Pipe 91	
19.50	Pipe 91	
19.55	Pipe 91	
19.60	Pipe 91	
19.65	Pipe 91	
19.70	Pipe 91	
19.75	Pipe 91	
19.80	Pipe 91	
19.85	Pipe 91	
19.90	Pipe 91	
19.95	Pipe 91	
20.00	Pipe 91	
20.05	Pipe 91	
20.10	Pipe 91	
20.15	Pipe 91	
20.20	Pipe 91	
20.25	Pipe 91	
20.30	Pipe 91	
20.35	Pipe 91	
20.40	Pipe 91	
20.45	Pipe 91	
20.50	Pipe 91	
20.55	Pipe 91	
20.60	Pipe 91	
20.65	Pipe 91	
20.70	Pipe 91	
20.75	Pipe 91	
20.80	Pipe 91	
20.85	Pipe 91	
20.90	Pipe 91	
20.95	Pipe 91	
21.00	Pipe 91	
21.05	Pipe 91	
21.10	Pipe 91	
21.15	Pipe 91	
21.20	Pipe 91	
21.25	Pipe 91	
21.30	Pipe 91	
21.35	Pipe 91	
21.40	Pipe 91	
21.45	Pipe 91	
21.50	Pipe 91	
21.55	Pipe 91	
21.60	Pipe 91	
21.65	Pipe 91	
21.70	Pipe 91	
21.75	Pipe 91	
21.80	Pipe 91	
21.85	Pipe 91	
21.90	Pipe 91	
21.95	Pipe 91	
22.00	Pipe 91	
22.05	Pipe 91	
22.10	Pipe 91	
22.15	Pipe 91	
22.20	Pipe 91	
22.25	Pipe 91	
22.30	Pipe 91	
22.35	Pipe 91	
22.40	Pipe 91	
22.45	Pipe 91	
22.50	Pipe 91	
22.55	Pipe 91	
22.60	Pipe 91	
22.65	Pipe 91	
22.70	Pipe 91	
22.75	Pipe 91	
22.80	Pipe 91	
22.85	Pipe 91	
22.90	Pipe 91	
22.95	Pipe 91	
23.00	Pipe 91	
23.05	Pipe 91	
23.10	Pipe 91	
23.15	Pipe 91	
23.20	Pipe 91	
23.25	Pipe 91	
23.30	Pipe 91	
23.35	Pipe 91	
23.40	Pipe 91	
23.45	Pipe 91	
23.50	Pipe 91	
23.55	Pipe 91	
23.60	Pipe 91	
23.65	Pipe 9	



NOTE—All corners and Witness Posts have been set with 3"x4" white painted Redwood Posts properly marked with marking iron and 1/2" iron pipes 4 ft. driven down alongside.

All corners/pits in Roads have been set with short pieces of 1" pipe driven 30 in.

Lines and angle stakes are 2"x3" Redwood Stakes.

The middle of the Dougherty Road is the actual Center line of this surveyed track, except along the heavy graded fence of the Road, which, where a line parallel to and 20 ft. from said fence is a green stake.

On north boundary of ranch the fence posts in bends of fence have been marked with marking iron on their north faces and with numbers as shown on map.

No 3

MAP

showing lines, Courses, Distances, Corners and Monuments
set in Survey of

ALMA DALE

the property of

Jas. L. Flood

in Secs. 5 and 6 ~ T.9.S. R. 1 W.
and Secs. 31 and 32 ~ T.8.S. R. 1 W.

Surveyed in July and August, 1900

by A. T. Herrmann

of Herrmann Bros., and F. E.
San Jose, Calif.