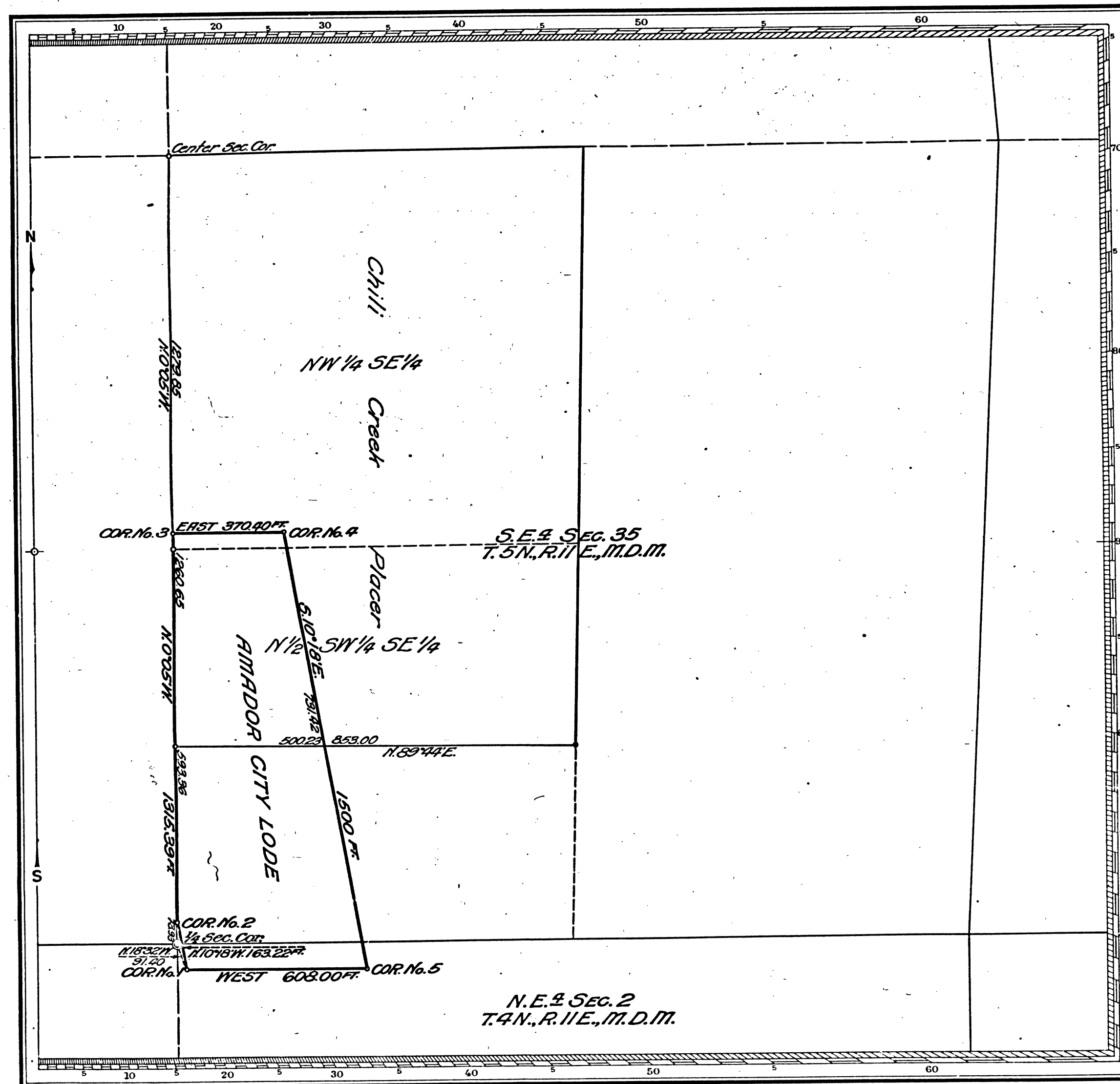


Township N^o 5 NORTH Range N^o 11 EAST

Meridian.

(4-675)



SEGREGATION SURVEY
Sacramento Land District.
PLAT
OF THE CLAIM
Segregated from the Chili Creek Placer
KNOWN AS THE
AMADOR CITY LODGE

IN Chili Gulch MINING DISTRICT,
Calaveras COUNTY, California
Containing an Area of _____ Acres.
Scale of 300 Feet to the inch.
Variation 17° 25' East
SURVEYED January 17, 1927 BY
James H. Finley, U.S. Mineral Surveyor.

The Original Field Notes of the Survey of the Mining Claim from which this plat has been made under my direction, have been examined and approved, and are on file in this Office, and I hereby certify that they furnish such an accurate description of said Mining Claim as will, if incorporated into a patent, serve fully to identify the premises, and that such reference is made therein to natural objects or permanent monuments as will perpetuate and fix the locus thereof.

~~that the location of said improvements is correctly shown upon this plat, and that no portion of said labor or improvements has been included in the estimate of expenditures upon any other claim.~~

And I further certify that this is a correct plat of said Mining Claim made in conformity with said original field notes of the survey thereof, and the same is hereby approved.

Public Survey Office
San Francisco, California
February 15, 1927

Frank E. Barker
Office Cadastral Engineer

DEPOSIT \$35.00
COST \$35.00
REFUND \$0.00

Vol. 479-3

in this office, which have been examined and approved.
U. S. Surveyor General's Office.

Surveyor General.

41 416

T 5 N R 11 E M D

BLM 229

CHAINS

CHAINS

10 20 40 60 80 120