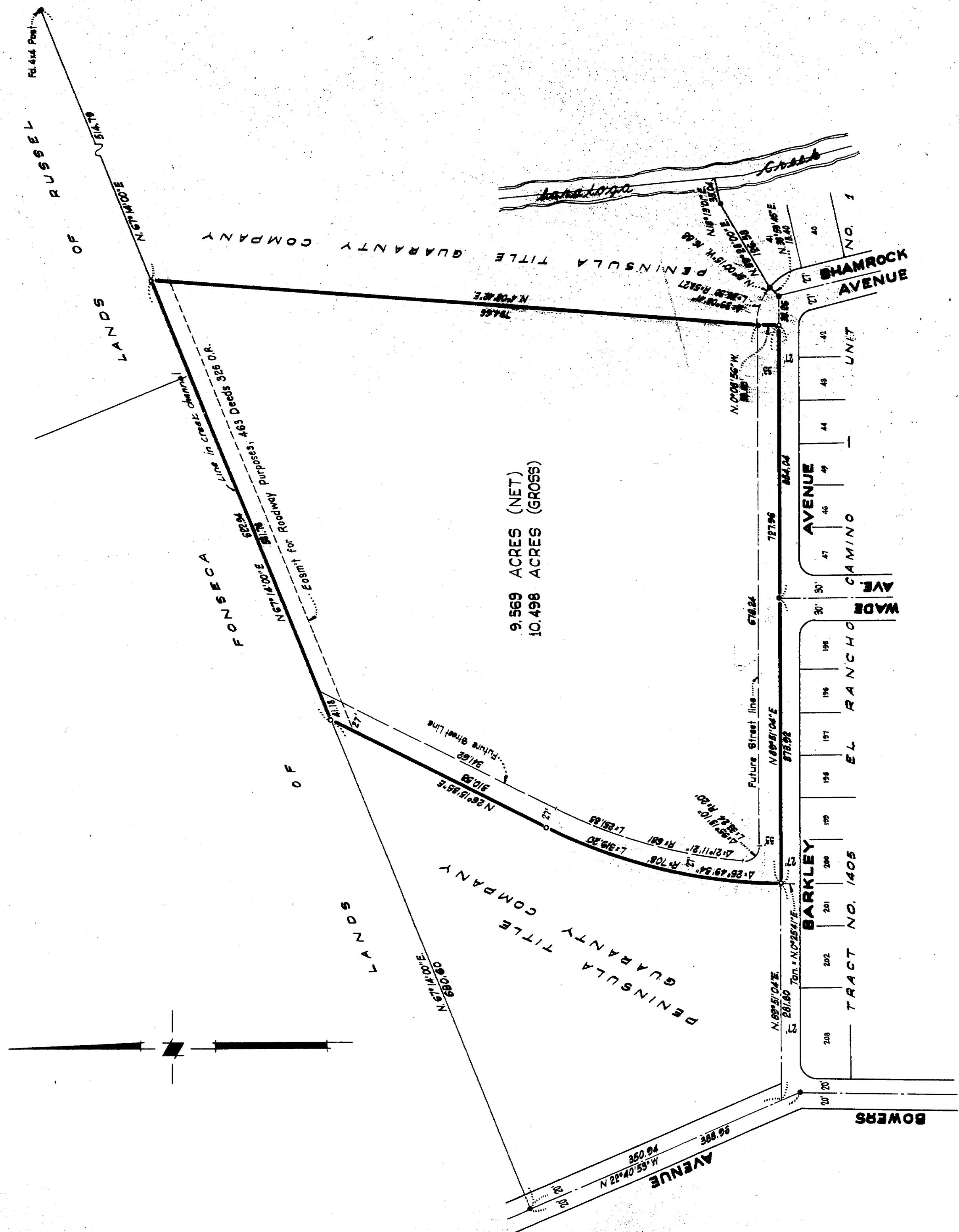


144



**ENGINEER'S CERTIFICATE**  
I, George S. Nolte, hereby certify that I am a Registered Civil Engineer of the State of California; that this map correctly represents a survey made under my supervision in August, 1955; that the survey is true and complete as shown; that all the monuments shown thereon actually exist and their positions are correctly shown and that said monuments are sufficient to enable the survey to be retraced. Surveyed at the request of the Jefferson Union School District.

*George S. Nolte*  
REGISTERED CIVIL ENGINEER - CERT. NO. 7955

**COUNTY ENGINEER'S CERTIFICATE**  
Checked mathematically and found satisfactory.  
LEONARD BUSHNELL, County Engineer.

Dated Nov 25 1955  
By *Leonard Bushnell*  
DEPUTY

**CITY ENGINEER'S CERTIFICATE**  
Checked and approved the 23rd day of November 1955.  
EDGAR C. SCHOTT, City Engineer.

By *Edgar C. Schott*

**CITY PLANNING COMMISSION'S CERTIFICATE**  
Approved by the City of Santa Clara Planning Commission in accordance with the requirements of law at a duly authorized meeting held 26th October 1955.

By *George J. Millar*  
SECRETARY

**CITY CLERK'S CERTIFICATE**  
I hereby certify that this Record of Survey Map of a portion of Section 4, T. 7 S., R. 1 W., M. D. B. & M., was approved by the Santa Clara City Council at a regular meeting held November 1955 in accordance with the conditional approval thereof by the City Planning Commission.

*Edith Beck*  
CITY CLERK AND EX-OFFICIO CLERK OF THE  
SANTA CLARA CITY COUNCIL, CALIFORNIA

1152520  
**COUNTY RECORDER'S CERTIFICATE**  
Filed at the request of George S. Nolte at 1:22 P.M. on the 28 day of Nov 1955, and recorded in Book 55 of Maps at Page 13, Santa Clara County Records, California.

*500*  
SYL C. TULLY, County Recorder.  
By *Syl C. Tully*

# RECORD OF SURVEY

A PORTION OF SECTION 4, T. 7 S., R. 1 W., M. D. B. & M., WITHIN THE  
CITY OF SANTA CLARA CALIFORNIA

SCALE 1"=100' SEPTEMBER 1955

**GEORGE S. NOLTE**  
CIVIL ENGINEER - LAND SURVEYOR  
PALO ALTO - SANTA CLARA.

**NOTES**  
All distances and dimensions are shown in feet and decimals thereof.  
• Indicates a 3/4" Iron Pipe set.  
• Indicates monument found.

**BASIS OF BEARINGS**  
The bearing, N. 89° 51' 04" E., of the centerline of Barkley Avenue as shown on that certain map entitled "TRACT NO. 1405, EL RANCHO CAMINO UNIT NO. 1", recorded in Book 57 of Maps at Pages 32 & 33, Santa Clara County Records, California, was taken as the basis of bearings shown on this survey.

W.H.K., JR.

642-55