

CORNER RECORD

Agency Index

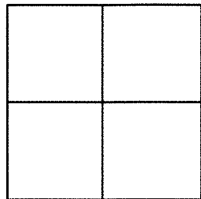
Blk 98 pg 41

Document Number

CR 10132City of BERKELEYCounty of ALAMEDA, CaliforniaBrief Legal Description PIN MONUMENT LOCATED WITHIN THE INTERSECTION OF SONOMA AVENUE AND SIERRA STREET

CORNER TYPE

COORDINATES (Optional)



Government Corner ☐ Control ☒
Meander ☐ Property ☐
Rancho ☐ Other ☐

Date of Survey 5/11/17N. E. Elevation 208.25Units Metric ☐ U.S. Survey Foot ☒Horizontal Datum Zone Epoch Date Vertical Datum CITY OF BERKELEY☐ Complies with Public Resources Code §§8801-8819☐ Complies with Public Resources Code §§8890-8902PLS Act Ref: ☐ 8765(d)☒ 8771☐ 8773☐ Other:Corner/
Monument: ☒ Left as found☐ Established☐ Rebuilt☒ Pre-Construction☐ Found and tagged☐ Reestablished☐ Referenced☐ Post-Construction

Narrative of corner identified and monument as found, set, reset, replaced, or removed:

☒ See sheet #2 for description(s) :

FOUND 3/8" IRON PIN IN CONCRETE IN MONUMENT WELL. CITY ID B1686

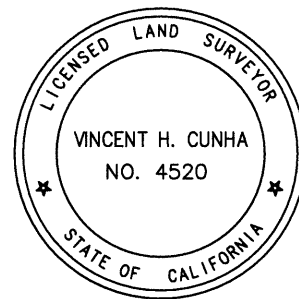
FOUND AND SET POINTS AS SHOWN ON PAGE 2.

THIS POINT WAS REFERENCED PRIOR TO A CONSTRUCTION PROJECT IN THE VICINITY.

THE TIES SHOWN HEREON ARE FOR THE PURPOSE OF PERPETUATING FOUND MONUMENTATION.
NO CLAIM IS MADE AS TO THE RELATIONSHIP OF THE POINTS OR LINES SHOWN HEREON TO TRUE
BOUNDARY LOCATION.

SURVEYOR'S STATEMENT

This Corner Record was prepared by me or under my direction in conformance with

the Professional Land Surveyors' Act on MAY 19, 2017.Signed Vincent H. Cunha P.L.S. No. LS 4520
VINCENT H. CUNHA

COUNTY SURVEYOR'S STATEMENT

This Corner Record was received 1 JUNE, 2017and examined and filed 11 AUGUST, 2017.Signed Michael Rubner P.L.S. or R.C.E. No. 6843Title COUNTY SURVEYOR

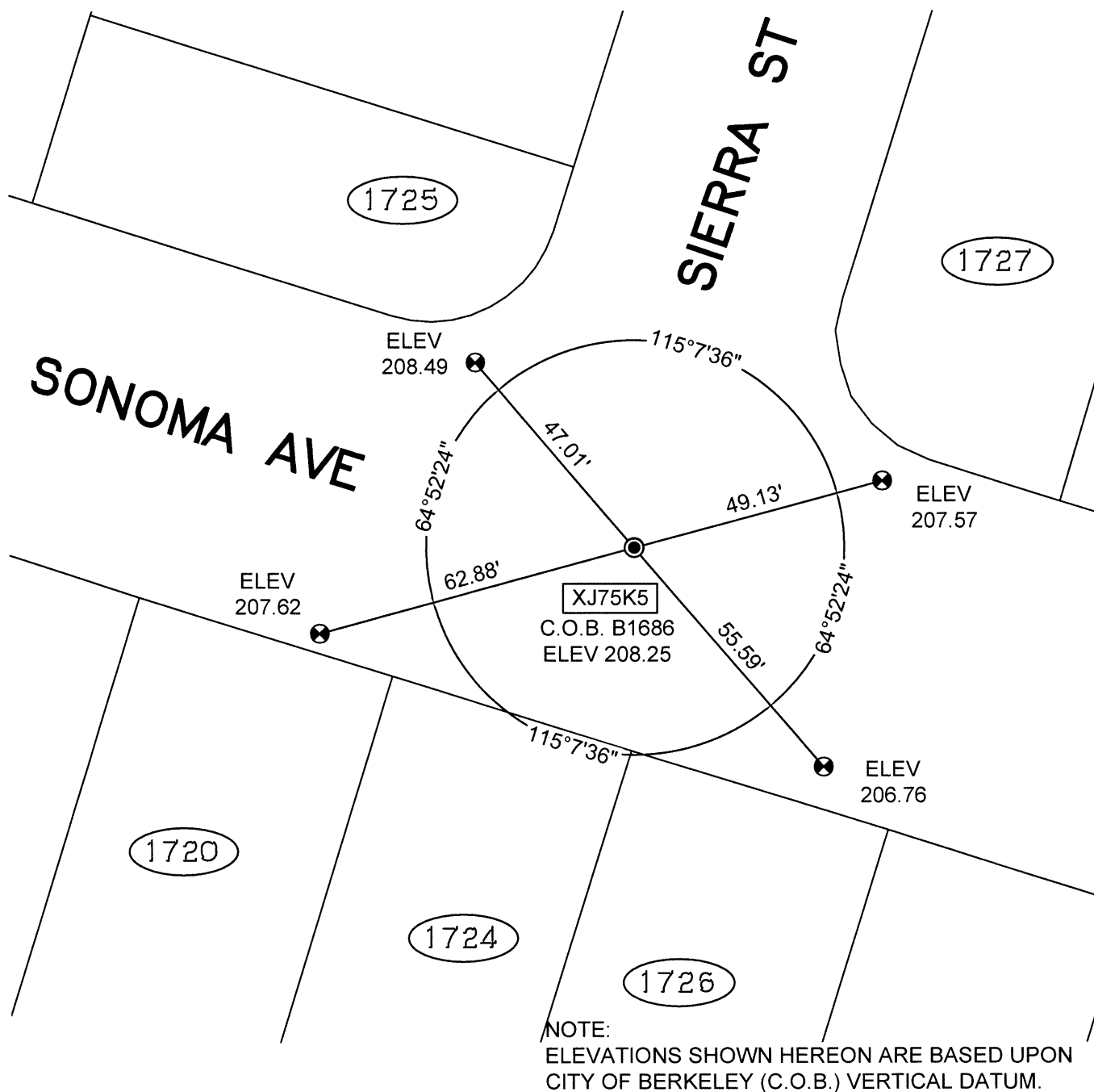
County Surveyor's Comment



SCALE: 1"=30'

LEGEND

- FOUND IRON PIN IN CONCRETE IN MONUMENT WELL
- ⊗ SET CUT CROSS IN WALK
- ✕ SET CUT CROSS IN CURB
- ⊗ SET MAG AND SHINER
- SET REBAR & CAP STAMPED "CEI RP"
- AA##A# ALAMEDA COUNTY MONUMENT ID
- 19592 REFERENCE STREET ADDRESS



216010-M-SONOMA-CR2