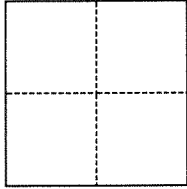


CORNER RECORD

Agency Index BK 139 Pg 80Document Number CR 14239City of Unincorporated Eden Township County of Alameda, CaliforniaBrief Legal Description Monument at Stanton Avenue & Carlton Avenue

CORNER TYPE



- ☐ Government Corner ☒ Control
☐ Meander ☐ Property
☐ Rancho ☐ Other

Date of Survey March 6, 2020

COORDINATES (Optional)

N. _____ E. _____

Elevation _____

Units ☐ Metric ☒ U.S. Survey Foot

Horizontal Datum _____

Zone _____ Epoch Date _____

Vertical Datum _____

☐ Complies with Public Resources Code §§8801-8819☐ Complies with Public Resources Code §§8890-8902PLS Act Ref.: ☐ 8765(d) ☒ 8771 ☐ 8773 ☐ Other:

Corner/
Monument: ☒ Left as found ☐ Established ☐ Rebuilt ☒ Pre-Construction
☐ Found and tagged ☐ Reestablished ☒ Referenced ☐ Post-Construction

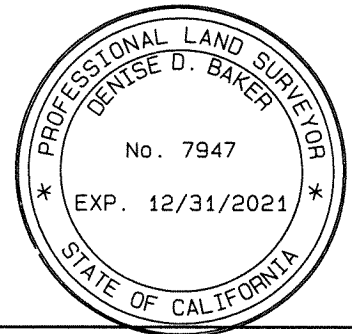
Narrative of corner identified and monument as found, set, reset, replaced, or removed:

☒ See sheet #2 for description(s):

Found 2" brass disk monument on storm drain inlet stamped "ALCOSUR CAR-STA 1979". Set
reference ties prior to construction.

SURVEYOR'S STATEMENT

This Corner Record was prepared by me or under my direction in conformance with

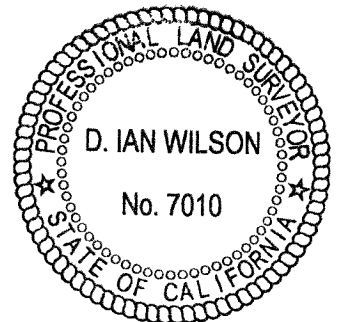
the Professional Land Surveyors' Act on May 15, 2020Signed Denise Baker P.L.S. or R.C.E. No. P.L.S. #7947

COUNTY SURVEYOR'S STATEMENT

This Corner Record was received _____

and examined and filed AUG 3 4 2021Signed D. Ian Wilson P.L.S. or R.C.E. No. 7010Title ALAMEDA COUNTY SURVEYOR

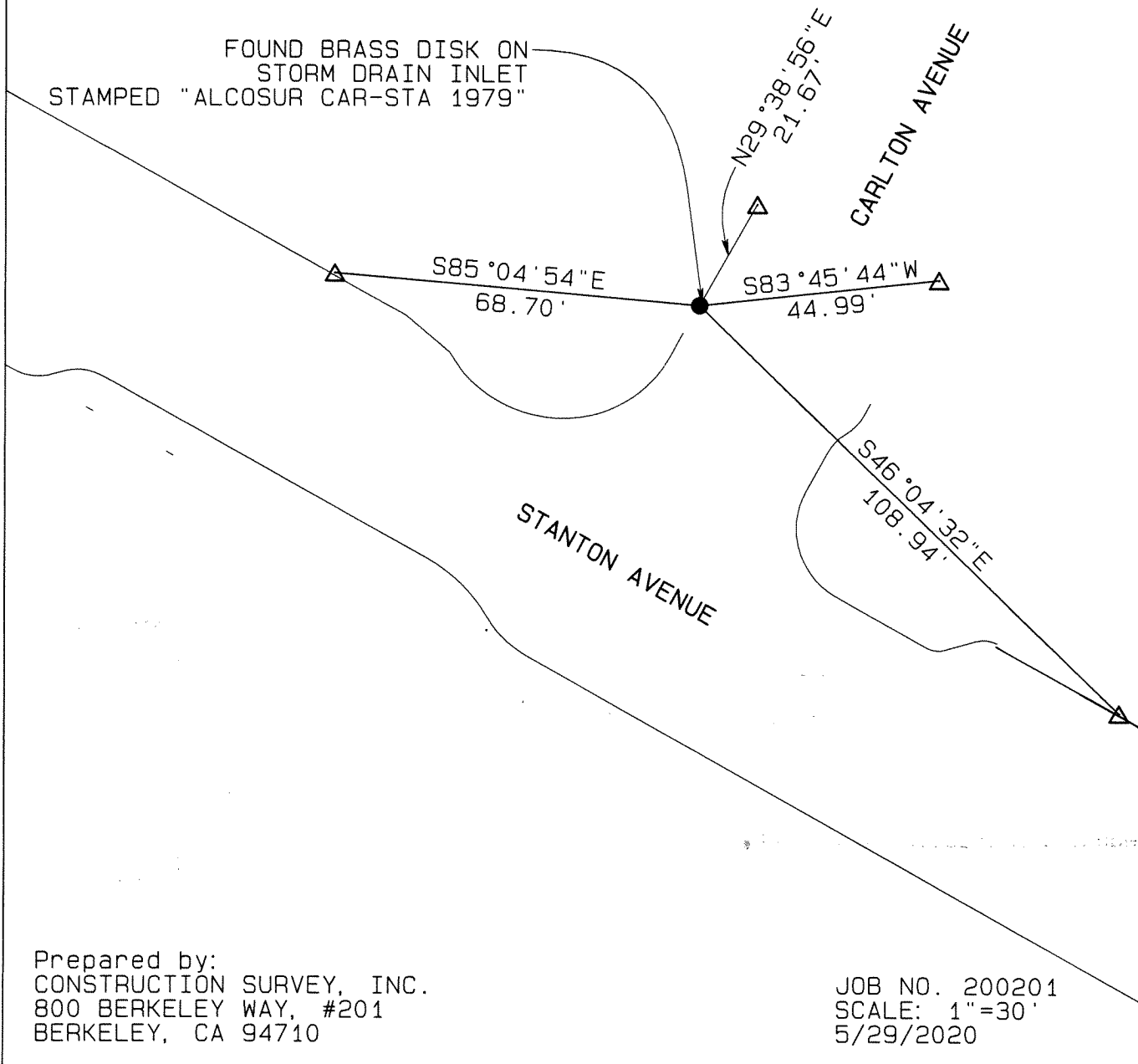
County Surveyor's Comment

~~Alameda County Specification No. 2000~~

- FOUND MONUMENT AS NOTED
- △ SET MAG NAIL & TAG (LS 7947) IN CONCRETE CURB



FOUND BRASS DISK ON
STORM DRAIN INLET
STAMPED "ALCOSUR CAR-STA 1979"



Prepared by:
CONSTRUCTION SURVEY, INC.
800 BERKELEY WAY, #201
BERKELEY, CA 94710

JOB NO. 200201
SCALE: 1"=30'
5/29/2020